



WATER STREET
JAMESTOWN NEW YORK

TABLE OF CONTENTS

	Introduction
FG	Finish Guide
BD	Bead and Decorative Collections
HD	Hudson Collection
JS	Jamestown Collection
KS	Kinsley Collection
LX	Lexington Collection
MD	Madison Collection
MN	Manor Collection
PR	Port Royal Collection
TB	Tab Pulls
TR	Terrace Collection
UL	Urban Loft Collection
PLN	Price List By Part Number
PLC	Price List By Collection
QS	Quick Ship Price List
OFS	Ordering Forms & Supplemental Information



WATER STREET
JAMESTOWN NEW YORK

INTRODUCTION

THE COMPANY



Water Street's rich heritage in hardware and manufacturing is based in its roots in Jamestown, New York. Anchored on the shores of Chautauqua Lake, in western New York, Jamestown has been home to a proud tradition of American manufacturing. Jamestown, once known as the "Furniture Capital of the World," began its manufacturing with mills, and eventually became the birthplace of the crescent wrench and automatic voting machines.

Water Street, once known as Jamestown Furniture Hardware, has established itself as a leader in providing the highest quality furniture hardware designed in collaboration with our customers. As Jamestown itself has evolved, so has our business. Our vision has expanded to offering an innovative line of cabinet, door, and furniture hardware for homes of today and tomorrow.

Our passionate team of designers and artisans has worked in concert to develop a well appointed line of decorative hardware which embodies harmony of form, function, and deep devotion to beauty. Leading the marketplace with innovative designs, quality in every detail, and excellent customer service are essential to the future of American manufacturing. It's a challenge we were born to.

We are proud to welcome our loyal customers who have honored us with the opportunity to be a part of their spectacular projects, and we are thrilled to embrace new clients. We appreciate your enthusiastic support as we fill our portfolio with innovation and beauty for the well dressed home.

OUR PROCESS

Whether choosing from our distinctive collections or working with our designers to develop something unique for your project, it is our mission is to make the process hassle free and fun. From the start of a project to the completion, Water Street hardware is finished to order by our skilled artisans. This allows homeowners flexibility, choice, and the ability to personalize their hardware just as they have other details of their home. Whether as the finishing touch on a new project, or to breathe new life into a room, hardware is like the cherry on the top of a sundae.



CUSTOM WORK

Water Street has the capability to meet the exacting specifications of a client's needs or design. Our design team uses a variety of techniques to bring an idea to life whether it be a traditional spin off or a completely new contemporary look. Lead times and pricing will be quoted per project and may require a deposit prior to the start of any renderings. Once an idea is transformed into a working design and prior to production, the client will be presented with artist renderings, technical drawings, and/or prototypes for approval.

CONTRACT & HOSPITALITY

Water Street's staff has decades of experience in cabinet, door, and furniture hardware design and manufacturing and is proficient in a vast variety of production and finishing techniques. This make us well prepared to serve projects ranging from speculative residential to resort and hospitality. Form and function are inseparable and are executed to perfection to create hardware that meets schedule and budget requirements. Pricing is determined by complexity and scope of the project. For more information, please contact a representative at info@waterstreetbrass.com.

HOW TO ORDER

Phone: 716-763-0059
Toll Free: 855-664-4321
Fax: 716-763-6043
E-mail: orders@waterstreetbrass.com

Please include the following information on your order:

- Item Number
- Finish Code or Finish Name
- Quantity
- If applicable, designate bead, coin, diamond, rope or hammered.
Use the part number + the designator -B, -C, -D, -R or -H.
- Back to back pulls available. Refer to the *Order Forms* section of this catalog for details.
There is a \$125 upcharge per set.

There are no minimum order requirements.

Orders of \$25,000.00 require a 50% deposit.

SHIPPING

Shipping charges are based on size and weight and will be sent UPS for standard freight. Larger orders may be shipped by an independent trucking firm. Cabinet orders over \$1,500 net will be shipped at no charge.

QUICK SHIP ORDERS

Quick Ship items are available in listed finishes only and will ship within 24 hours from receipt of the order. To utilize the Quick Ship option, a separate purchase order must be submitted. Otherwise, eligible items will be treated as a standard order and the Quick Ship items will ship when the balance of the order is complete.

Quick Ship is not available on hand hammered or engraved items.

EXPEDITED ORDERS

Orders may be expedited for a 30% upcharge. Lead times will vary depending on finish and custom options chosen such as hammering and monogramming. Lead times and availability are dependent upon production levels at the time of the order. Ship dates are not guaranteed. Please contact customer service for current lead times or more information.

SAMPLES

Samples are available upon request and may be ordered at a .25 multiplier off list price. Ask your representative for details. Sample orders are not returnable and lead times are subject to availability. Finish sample chips and finish rings are also available to order. Water Street will send up to 3 finish chips per customer at no charge. Please see the Finish Chip Order Form in the Order Forms section of this catalog.

WARRANTY

Water Street hardware is designed, manufactured and finished with constant vigilance to ensure superior style, quality and craftsmanship. We guarantee our products to be free of defects in material and workmanship for life. Any defective hardware will be replaced or repaired free of charge. Damage to hardware caused by customer misuse or improper cleaning is not covered. Submit photographic documentation of all defects prior to returning to WSB Hardware. **Damage sustained in return shipping due to poor packaging will not be covered. Removal and re-installation of the hardware is not covered by this warranty.**

Please note that some of our hardware has a living finish and will patina over time, enhancing each piece with the beautiful and unique character reflective of hand finishing. A "living finish" release form is provided with the Finish Guide and can be signed by the end user to acknowledge understanding that these changes will occur. These finishes are not covered by our warranty. Our lacquered finishes have a one year warranty and are not considered a lifetime finish.

RETURN POLICY

Items may be returned within 60 days of our shipment date. Claims for incorrect orders or items damaged in shipping must be filed within 30 days of shipment. A return authorization must be obtained by contacting us at orders@waterstreetbrass.com or calling toll free 855-664-4321. A 25% restocking fee will apply for returned orders and shipping costs are non-refundable.

All products must be packaged carefully and returned in 'like new' condition in order to receive credit. Return shipping charges will be covered by Water Street for defective or incorrect orders; all other shipping charges are the responsibility of the dealer. Custom work, personalized or hand hammered items, and special orders are not eligible for return.



STANDARD FINISHES



PS*
Polished Silver



PN*
Polished Nickel



PC*
Polished Chrome



AS*
Antique Silver



SS*
Satin Silver



SN
Satin Nickel



SC*
Satin Chrome



WN
Weathered Nickel



WAN
Weathered
Antique Nickel



AN
Antique Nickel



BN*
Burnished Nickel



BNAN*
Burnished
Antique Nickel



PAN
Polished Antique
Nickel



PB
Polished Brass



PBNL*
Polished Brass
No Lacquer



PA
Polished Antique



PAFL
Polished Antique
Flat



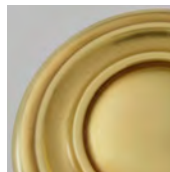
BNB
Burnished Brass



BNAB*
Burnished
Antique Brass



TN*
Tarnished



MTN*
Matte Tarnished



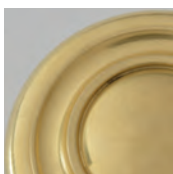
SB
Satin Brass



SBNL*
Satin Brass
No Lacquer



AB
Antique Brass



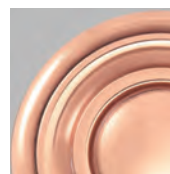
BNBW*
Burnished Brass
Waxed



WB
Weathered Brass



WZ
Weathered Bronze



PCU*
Polished Copper



SCU
Satin Copper



WC
Weathered Copper



AC*
Antique Copper



RB*
Relieved Bronze



ORB
Oil Rubbed Bronze



MB
Matte Black

* Designates an uncoated or waxed finish.

◆ All finishes are available uncoated, waxed or lacquered upon request.

FINISH GUIDE

This brief overview of available finishes for our hardware will discuss the properties, characteristics, and the care and maintenance for each. Some parts are tarnished to accelerate the aging process, some are provided in an untreated state, and others have protective coatings applied. Depending on your taste and style, a naturally aging (living finish) can be a rich addition to your project or you may desire something that will remain relatively constant over time. In many cases the patina of a part is considered highly desirable and should not be looked upon as a bad development.

When choosing a finish, it is advisable to consider the environment and conditions where your hardware will be used and seen. Hopefully this guide will aid you in choosing the best finish for your application. It should be stated that all finishes can and will change over time. Factors like humidity, exposure to weather or ultraviolet (UV) light, and frequency of use (traffic) will all play a role in how your hardware will change. It is for this reason that Water Street Brass does not warranty finishes.

In this guide, we will present each of our standard finishes along with an **Aging Factor** number assigned to it. This number will give you an idea of how your hardware finish holds up to general use and how quickly it is expected to change. Finishes will be rated as follows:

- 1 **Low** - expect tarnishing and a patina to develop shortly after installation.
- 2 **Moderate** - general use and weather conditions may cause changes in a years' time or less.
- 3 **Medium** - little change in the finish will occur for an extended period of time.
- 4 **High** - under normal circumstance changes will be hardly noticed for a long period time.
- 5 **Very High** - little to no significant changes should be noticed throughout the life of the finish.

TERMINOLOGY

- **Aging Factor** - a scale that is used to measure how quickly a finish will change over time as a result of use, atmospheric conditions such as humidity, pollution and other factors.
 - **Burnish** - the process of lightly etching a part to produce a look of old but well taken care of hardware.
 - **Highlighting** - the process wherein skilled technicians manually enhance already finished parts to raise either the base color or the core material color.
 - **Lacquer** - a coating applied onto hardware which forms a hard protective coating. Lacquer is difficult to remove and redress in the field.
 - **Oxidizing** - the process of introducing brass to a chemical agent to speed up the natural tarnishing or coloring process.
 - **Patina** - a color developed on the surface of a part over time by oxidation. Often green on copper, brown on brass and bronze, gray or black on silver finishes.
 - **Plating** - the process of permanently adhering a thin but durable coating of an alternate metal directly to the surface of the hardware. Parts are submerged into an electrically charged chemical bath. As the electrons flow through this solution molecules of the new metal are deposited and fused onto the brass host.
 - **Tarnish** - the natural aging of metals through exposure to humidity in the air, moisture and even the natural hand oils deposited on hardware through use.
 - **Wax** - any of a number of natural, semisolid protective agents applied to enhance the luster of a material and provide protection against water and dirt. Waxes will erode with use and age and should be considered a temporary protection.
 - **Weathered** - the purposeful exposure of hardware to scratching or denting agents to create an old feel and appearance.
-



UNCOATED FINISHES

Uncoated finishes change over time depending on factors like humidity, salinity, and general use. Also known as “Living Finish,” these finishes are not warranted for discoloration and change. **A “living finish” release form may be used at the dealer’s discretion. This can be signed by the end user to ensure that they understand the aging characteristics of a living finish.** The release form is located at the end of this finish guide or in the Forms & Supplements section of this manual.

Care and cleaning: Remove dirt and oils with a mild household or dish soap, warm water and a soft cloth. A light coat of metal polish and wax applied periodically will help to preserve and maintain your hardware’s appearance.



PBNL POLISHED BRASS, NO LACQUER

AGING FACTOR: 1

Will begin to naturally darken within the first month of installation and will continue over time with a beautiful brown patina.

Remove dirt and oils with soap and soft damp cloth. Apply a wax to preserve and restore a high polish appearance.

Interior / exterior.



SBNL SATIN BRASS, NO LACQUER

AGING FACTOR: 1

Will begin to naturally darken within the first month of installation and will continue over time with a beautiful brown patina.

Remove dirt and oils with soap and soft cloth. Apply wax to preserve.

Interior / exterior.



PN POLISHED NICKEL

AGING FACTOR: 3

Nickel is a fairly tarnish resistant material. It can be dressed in the field

Remove dirt and oils with soap and soft cloth.

Interior / exterior.



BN BURNISHED NICKEL

AGING FACTOR: 3

Nickel is a fairly tarnish resistant material. It can be dressed in the field

Remove dirt and oils with soap and soft cloth.

Interior / exterior.



PC POLISHED CHROME

AGING FACTOR: 4

Chrome is a very durable finish and will remain constant for a long period of time.

Remove dirt and oils with soap and soft cloth.

Interior / exterior.



SC SATIN CHROME

AGING FACTOR: 4

Chrome is a very durable finish and will remain constant for a long period of time.

Remove dirt and oils with soap and soft cloth.

Interior / exterior.



WAXED FINISHES

Hardware provided with a waxed finish is intended to age gracefully. Our fine silver finishes fall in this category. You may choose to keep them highly polished as you might with dinnerware or you may prefer the warmth and character that comes with the natural patina. ***A "living finish" release form may be used at the dealer's discretion. This can be signed by the end user to ensure that they understand the aging characteristics of a living finish.*** The release form is located at the end of this finish guide or in the Forms & Supplements section of this manual.

Care and cleaning: Remove dirt and oils with a mild household or dish soap, warm water and a soft cloth. A light coat of metal polish and wax applied periodically will help to preserve and maintain your hardware's appearance.



PS POLISHED SILVER

AGING FACTOR: 1

Real silver is very susceptible to tarnishing and will begin to age very quickly. Silver will darken over time with a gray or black patina.

Remove dirt and oils with soap and soft damp cloth. Apply a wax to preserve and restore a high polish appearance.

Interior applications - not recommended for exterior as weather will break down the plating.



AS ANTIQUE SILVER

AGING FACTOR: 1

Real silver is very susceptible to tarnishing and will begin to age very quickly. Silver will darken over time with a gray or black patina.

Remove dirt and oils with soap and soft damp cloth. Apply wax to preserve the appearance.

Interior applications - not recommended for exterior as weather will break down the plating.



SS SATIN SILVER

AGING FACTOR: 2

Real silver is very susceptible to tarnishing and will begin to age very quickly. Silver will darken over time with a gray or black patina.

Remove dirt and oils with soap and soft damp cloth. Apply wax to preserve the appearance.

Interior applications - not recommended for exterior as weather will break down the plating.



BNAN BURNISHED ANTIQUE NICKEL

AGING FACTOR: 2

Nickel is a fairly tarnish resistant material. It can be dressed in the field

Remove dirt and oils with soap and soft cloth. Apply wax to preserve.

Interior / exterior.



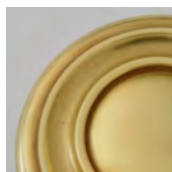
TN TARNISHED

AGING FACTOR: 1

Will begin to naturally darken within the first month of installation and will continue over time with a beautiful brown patina.

Remove dirt and oils with soap and soft damp cloth. Apply a wax to preserve appearance.

Interior / exterior.



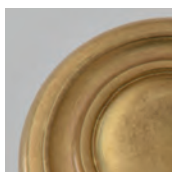
MTN MATTE TARNISHED

AGING FACTOR: 1

Will begin to naturally darken within the first month of installation and will continue over time with a beautiful brown patina.

Remove dirt and oils with soap and soft damp cloth. Apply a wax to preserve appearance.

Interior / exterior.



BNAB BURNISHED ANTIQUE BRASS

AGING FACTOR: 1

Will begin to naturally darken within the first month of installation and will continue over time with a beautiful brown patina.

Remove dirt and oils with soap and soft damp cloth. Apply a wax to preserve appearance.

Interior / exterior.



WAXED FINISHES (CONTINUED)



PCU POLISHED COPPER

AGING FACTOR: 1

Will begin to naturally darken within the first month of installation and will continue over time with a beautiful green patina.

Remove dirt and oils with soap and soft damp cloth. Apply a wax to preserve appearance.
Interior / exterior.



AC ANTIQUE COPPER

AGING FACTOR: 1

Will lighten at first as the oxidation begins to wear to show more copper. Over time the finish will darken and will gain a green patina.

Remove dirt and oils with soap and soft damp cloth. Apply a wax to preserve appearance.
Interior / exterior.



RB RELIEVED BRONZE

AGING FACTOR: 1

Will lighten at first as the oxidation begins to wear to show more brass. Over time the finish will darken with a brown patina.

Remove dirt and oils with soap and soft damp cloth. Apply a wax to preserve appearance.
Interior / exterior.

LACQUERED FINISHES

A clear protective coating can be applied to the hardware after the coloring or plating process is completed. This clear coating protects the surface from scratching and other wear and helps preserve the factory finish for many years.

The lacquer coat can have a shiny or matte finish. This lacquer is sprayed onto the parts and cured to a hard finish. This clear coating is vulnerable to scratching and chipping if exposed to heavy use. It is also subject to crazing, the formation of fine breaks on the surface due to exposure to ultraviolet light, moisture and cold. Not recommended for use on the home exterior.

Care and cleaning: Remove dirt and oils with a mild household or dish soap, warm water and a soft cloth. Waxing and polishing are not required.



SN SATIN NICKEL

AGING FACTOR: 3

Fairly tarnish resistant. Little change in the finish will occur over an extended period of time. The addition of lacquer helps to increase the longevity of this finish.

Remove dirt and oils with soap and soft cloth.
Interior / exterior.



WN WEATHERED NICKEL

AGING FACTOR: 3

Fairly tarnish resistant. Little change in the finish will occur over an extended period of time. The addition of lacquer helps to increase the longevity of this finish.

Remove dirt and oils with soap and soft cloth.
Interior / exterior.



WAN WEATHERED ANTIQUE NICKEL

AGING FACTOR: 3

Fairly tarnish resistant. Little change in the finish will occur over an extended period of time. The addition of lacquer helps to increase the longevity of this finish.

Remove dirt and oils with soap and soft cloth. Apply wax to preserve.
Interior / exterior.



LACQUERED FINISHES (CONTINUED)



AN ANTIQUE NICKEL

AGING FACTOR: 3

Fairly tarnish resistant. Little change in the finish will occur over an extended period of time. The addition of lacquer helps to increase the longevity of this finish.
Remove dirt and oils with soap and soft cloth.
Interior / exterior.



PAN POLISHED ANTIQUE NICKEL

AGING FACTOR: 3

Fairly tarnish resistant. Little change in the finish will occur over an extended period of time. The addition of lacquer helps to increase the longevity of this finish.
Remove dirt and oils with soap and soft cloth.
Interior / exterior.



PB POLISHED BRASS

AGING FACTOR: 3

Fairly tarnish resistant. Little change in the finish will occur over an extended period of time. The addition of lacquer helps to increase the longevity of this finish.
Remove dirt and oils with soap and soft cloth.
Interior / exterior.



PA POLISHED ANTIQUE

AGING FACTOR: 3

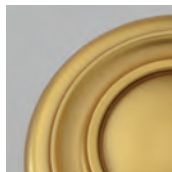
Tarnishes fairly quickly but the addition of lacquer helps to increase the longevity of the finish.
Remove dirt and oils with soap and soft cloth.
Interior / exterior.



PAFL POLISHED ANTIQUE FLAT

AGING FACTOR: 2

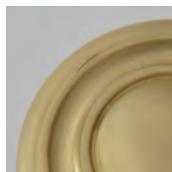
Tarnishes fairly quickly but the addition of lacquer helps to increase the longevity of the finish.
Remove dirt and oils with soap and soft cloth.
Interior / exterior.



BNB BURNISHED BRASS

AGING FACTOR: 2

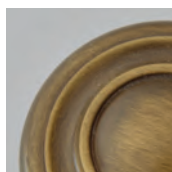
The gold lacquer used will age at a more accelerated rate than standard lacquers, allowing the exposed brass to give way to a natural, lovely dark patina.
Remove dirt and oils with soap and soft cloth.
Interior / exterior.



SB SATIN BRASS

AGING FACTOR: 3

Fairly tarnish resistant. Little change in the finish will occur over an extended period of time. The addition of lacquer helps to increase the longevity of this finish.
Remove dirt and oils with soap and soft cloth.
Interior / exterior.



AB ANTIQUE BRASS

AGING FACTOR: 3

Fairly tarnish resistant. Little change in the finish will occur over an extended period of time. The addition of lacquer helps to increase the longevity of this finish.
Remove dirt and oils with soap and soft cloth.
Interior / exterior.



LACQUERED FINISHES (CONTINUED)



WB

WEATHERED BRASS

AGING FACTOR: 3

Fairly tarnish resistant. Little change in the finish will occur over an extended period of time. The addition of lacquer helps to increase the longevity of this finish.

Remove dirt and oils with soap and soft cloth.

Interior / exterior.



WZ

WEATHERED BRONZE

AGING FACTOR: 2

The dark lacquer used will break down at a more accelerated rate than standard lacquers, allowing the exposed brass to give way to a natural highlights. Over time the exposed brass will evolve into a beautiful brown patina.

Remove dirt and oils with soap and soft cloth.

Interior / exterior.



ORB

OIL RUBBED BRONZE

AGING FACTOR: 2

The dark lacquer used will break down at a more accelerated rate than standard lacquers, allowing the exposed brass to give way to a natural highlights. Over time the exposed brass will evolve into a beautiful brown patina.

Remove dirt and oils with soap and soft cloth.

Interior / exterior.



WC

WEATHERED COPPER

AGING FACTOR: 3

Fairly tarnish resistant. Little change in the finish will occur over an extended period of time. The addition of lacquer helps to increase the longevity of this finish.

Remove dirt and oils with soap and soft cloth.

Interior / exterior.



SCU

SATIN COPPER

AGING FACTOR: 2

Tarnishes fairly quickly but the addition of lacquer helps to increase the longevity of the finish.

Remove dirt and oils with soap and soft cloth.

Interior / exterior.



MB

MATTE BLACK

AGING FACTOR: 3

Fairly tarnish resistant. Little change in the finish will occur over an extended period of time. The addition of lacquer helps to increase the longevity of this finish.

Remove dirt and oils with soap and soft cloth.

Interior / exterior.



POWDERCOAT FINISHES

AGING FACTOR: 4

In this process a fine colored powder is applied to the hardware and exposed to a heating process that melts and adheres the color to the part. Powdercoat provides a tough, durable finish. Hundreds of colors are available to achieve nearly any decor or decorating goals you have in mind. See our website or speak with one of our customer service representatives for more information on color choices.

Powder coating may have slightly less clarity than a lacquer or living finish. It may have irregular texture and is vulnerable to scratching in heavy traffic area.

Care and cleaning: Remove dirt and oils with a mild household or dish soap, warm water and a soft cloth. Waxing and polishing are not required.



A small sampling of the hundreds of colors available. Colors are approximated and could vary from actual finishes. Sample chips are available upon request.



PHYSICAL VAPOR DEPOSITION (PVD) FINISHES

AGING FACTOR: 5

Employing an environmentally friendly vacuum coating process, PVD is the most durable finish available. It provides a variety of decorative finishes with excellent wear and corrosion resistance. The hardware is first electroplated with a thin layer of copper, then palladium nickel. This prepares and fortifies the surface to accept the PVD finish. These finishes are resistant to scratching in high traffic areas and provide excellent protection to adverse weather and coastal atmospheric conditions.

Longer lead times are required for the PVD process - inquire when placing your order. There are a limited number of finishes available. Custom matches to existing hardware may not be possible.

Care and cleaning: Remove dirt and oils with a household or dish soap, warm water and a soft cloth. Waxing and polishing are not required.



PVD-PC
Polished Chrome



PVD-SC
Satin Chrome



PVD-PN
Polished Nickel



PVD-SN
Satin Nickel



PVD-PBN
Polished Black Nickel



PVD-SS
Stainless Steel



PVD-GR
Graphite



PVD-PB
Polished Brass



PVD-SB
Satin Brass



PVD-PG
Polished Gold



PVD-FG
French Gold



PVD-SG
Satin Gold



PVD-SBZ
Satin Bronze



PVD-MBZ
Mocha Bronze



PVD-ORB
Oil Rubbed Bronze

PREMIUM FINISH UPCHARGES

Additional lead times will apply and are subject to change. Inquire at time of order for more information.

PVD PRICING

Orders under \$6,000 list price; add a \$3,000 lot charge.

Orders over \$6,000, add an additional 50% to the list price.

Refer to Finish Guide for more information on PVD Finishes

POWDERCOAT PRICING

There is **no upcharge** for matte black powdercoat. For all other colors:

Orders under \$5,000 list price, add a \$1,000 setup charge to the order.

Orders over \$5,000 list price, add 20% to the list price.

Multiple pieces / sets can be combined to reach the setup charge as long as they are all the same powdercoat finish.

Refer to Finish Guide for more information on Powdercoat Finishes

SILVER FINISHES PRICING

There is a flat 20% upcharge on set pricing for all silver finishes. These include PS - Polished Silver, AS - Antique Silver and SS - Satin Silver.

CUSTOM WOODS PRICING

Custom wood options are available on our Manor and Urban Loft collections for an upcharge.

Orders under \$3,500 list price, add a \$2,100 list lot charge.

Order over \$3,500 list price, add 60% to the list price.



WATER STREET.
JAMESTOWN NEW YORK

LIVING FINISH RELEASE FORM

Many of our hardware finishes are considered “Living Finishes” and as such, will patina over time. This will enhance each piece with the beautiful and unique character reflective of hand finishing. These living finishes are unlacquered so they will be affected by different environmental conditions; salt air, direct sunlight, humidity and moisture will all contribute to the process. Changes might become apparent in just a few weeks to months, or even years in the future.

Additional factors like regular maintenance or even the frequency of use can have a bearing on the rate of aging that will take place. A knob or pull on your high traffic kitchen cabinet might exhibit highlights or relieved areas of color that a little used storage closet will not. These variations are considered desirable to some customers, while others may prefer a more consistent and durable finish. You may choose to have any of our finishes lacquered to extend their appearance and longevity.



If you select one of our finishes that is uncoated or waxed, be aware that changes in appearance will occur. Natural brass color finishes will tend to age more quickly than most plated finishes, but unlacquered plated finishes will tarnish and age as well. Hardware finished in our factory is subject to the same environmental variances and while we finish to very specific standards, living finishes may vary slightly from one batch to another. No guarantee is given that our living finish hardware will match showroom samples. If you require additional or replacement hardware, we recommend that you send back a sample from your existing hardware so that our skilled finishing artisans can attempt to match your hardware as closely as possible.

Please sign this page to acknowledge your understanding that these changes will occur. These finishes are not covered by our warranty.

Our living finishes include:

Polished Silver	Polished Nickel	Polished Chrome	Antique Silver
Satin Silver	Satin Chrome	Burnished Nickel	Burnished Antique Nickel
Polished Brass No Lacquer	Burnished Antique Brass	Tarnish	Matte Tarnish
Satin Brass No Lacquer	Burnished Brass Waxed	Polished Copper	Antique Copper
Relieved Bronze			

I acknowledge that any hardware with a living finish may not exactly match showroom samples, is subject to variances and will change in appearance over time, and that these items are not covered by a finish guarantee or warranty.

Signature of purchaser of the hardware.

Date

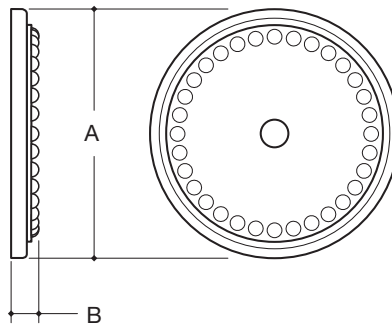


WATER STREET[®]

JAMESTOWN NEW YORK



		A	B	
QS	4343	BACK PLATE	1-7/16"	3/16"
	4343_B	APPLIANCE BACK PLATE	1-7/16"	3/16"
	4344	BACK PLATE	1-11/16"	3/16"
	4344_B	APPLIANCE BACK PLATE	1-11/16"	3/16"



- Made to order. Lead times determined by the production levels at the time of order.
- QS • Available for 24 hour Quick Ship. See the Quick Ship price list for available finishes.

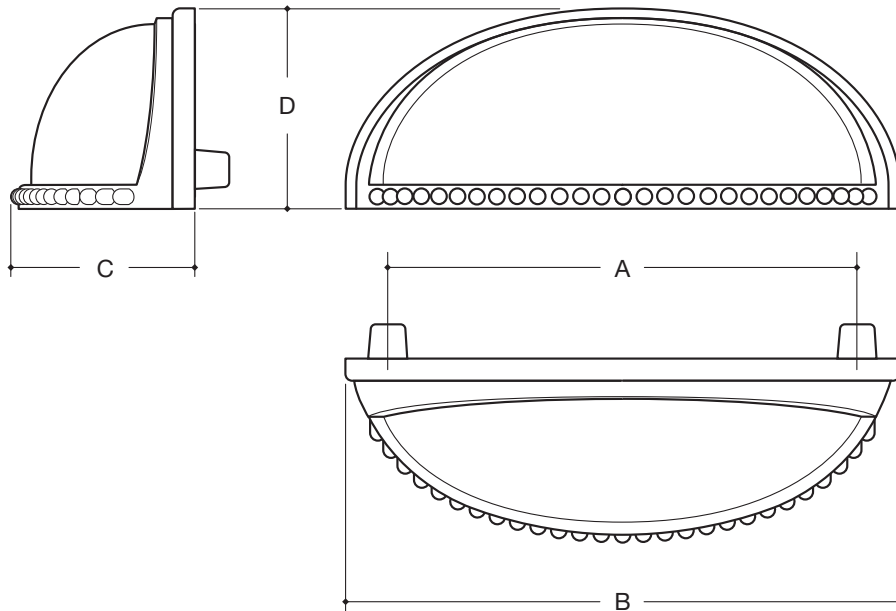


WATER STREET.

JAMESTOWN NEW YORK



	A	B	C	D
QS 7367 CUP PULL	3"	3-1/2"	1-3/16"	1-9/32"

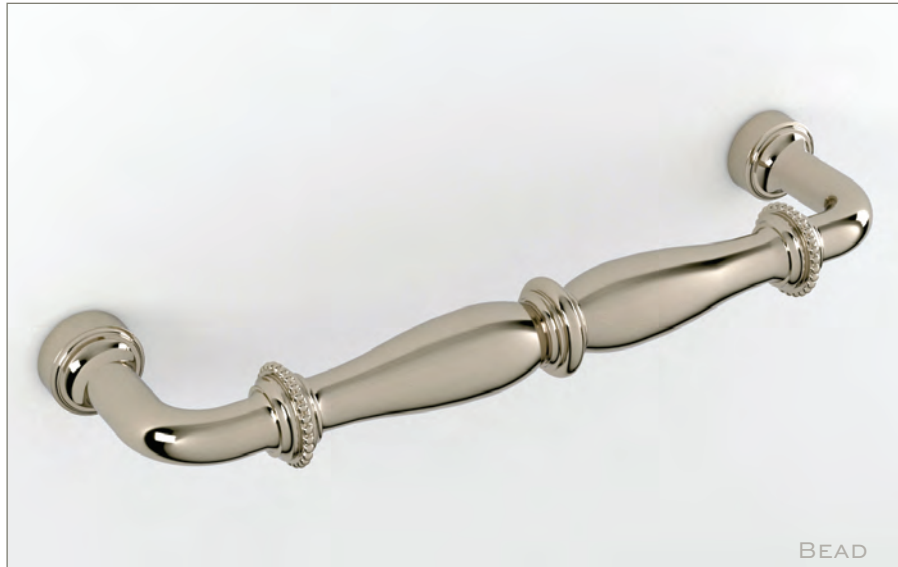


- Hand hammering available.
 - Made to order. Lead times determined by the production levels at the time of order.
- QS • Available for 24 hour Quick Ship. See the Quick Ship price list for available finishes.

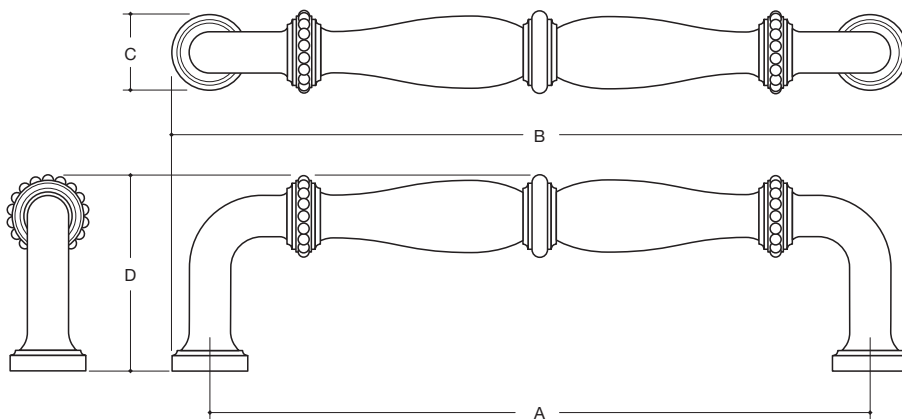


WATER STREET.

JAMESTOWN NEW YORK



		A	B	C	D
	7366 PULL	3-1/2"	4"	1/2"	1-1/4"
QS	7365 PULL	4"	4-1/2"	1/2"	1-5/16"
	7379-B PULL	6"	6-11/16"	11/16"	1-25/32"
BB	7370-B APPLIANCE PULL	8"	8-11/16"	15/16"	2-3/8"
BB	7371-B APPLIANCE PULL	12"	12-15/26"	15/16"	2-1/2"
BB	7390-B APPLIANCE PULL	18"	18-15/16"	15/16"	2-7/16"



- ◆ Hand hammering available.
- BB ◆ Available for back to back applications. Back plates required on glass door applications.
- ◆ Made to order. Lead times determined by the production levels at the time of order.
- QS ◆ Available for 24 hour Quick Ship. See the Quick Ship price list for available finishes.

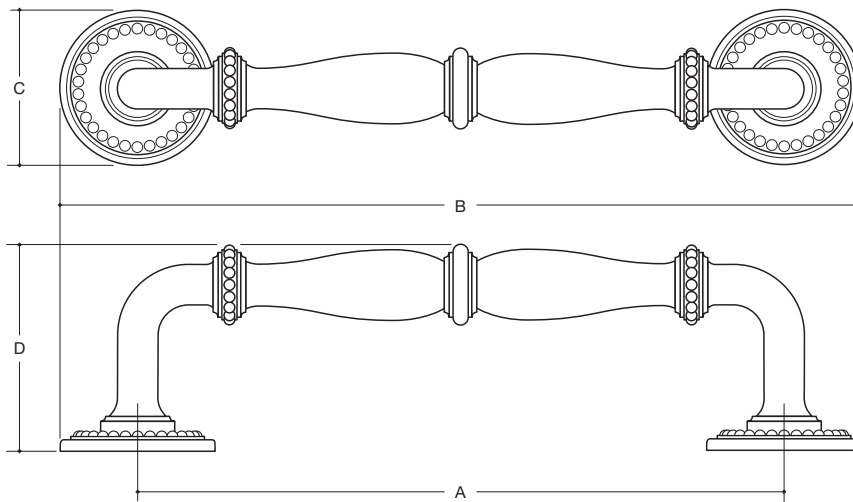


WATER STREET

JAMESTOWN NEW YORK



		A	B	C	D	
	7366 / 4343	PULL & BACK PLATE	3-1/2"	4-15/16"	1-7/16"	1-13/32"
	7365 / 4343	PULL & BACK PLATE	4"	5-7/16"	1-7/16"	1-15/32"
	7379-B / 4343	PULL & BACK PLATE	6"	7-7/16"	1-7/16"	1-15/16"
BB	7370-B / 4344_B	PULL & BACK PLATE	8"	9-11/16"	1-11/16"	2-17/32"
BB	7371-B / 4344_B	PULL & BACK PLATE	12"	13-11/16"	1-11/16"	2-21/32"
BB	7390-B / 4344_B	PULL & BACK PLATE	18"	19-11/16"	1-11/16"	2-19/32"



- ◆ Hand hammering available.
- BB ◆ Available for back to back applications. Back plates required on glass door applications.
- ◆ Made to order. Lead times determined by the production levels at the time of order.

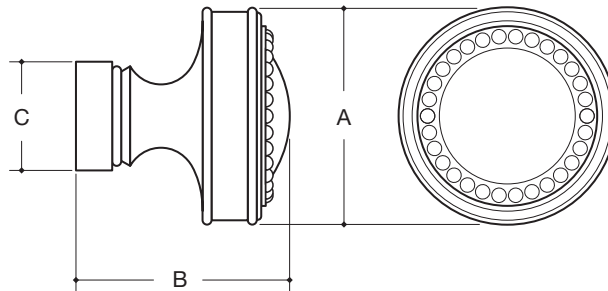


WATER STREET.

JAMESTOWN NEW YORK



		A	B	C	
QS	8442	BEAD KNOB	1-1/4"	1-1/4"	5/8"
	8443	BEAD KNOB	1-1/2"	1-15/32"	3/4"



- Made to order. Lead times determined by the production levels at the time of order.
- QS • Available for 24 hour Quick Ship. See the Quick Ship price list for available finishes.

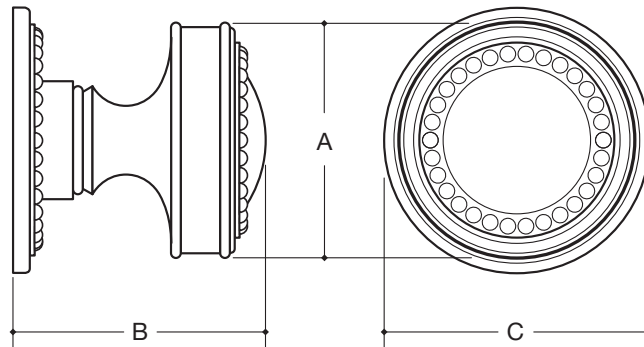


WATER STREET.
JAMESTOWN NEW YORK



BEAD

		A	B	C
8442 W/ 4343	KNOB & BACK PLATE	1-1/4"	1-13/32"	1-7/16"
8443 W/ 4344	KNOB & BACK PLATE	1-1/2"	1-21/32"	1-11/16"



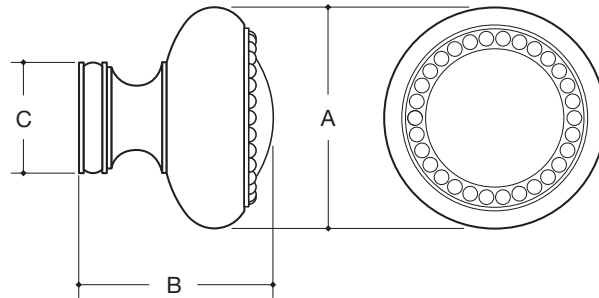
◆ Made to order. Lead times determined by the production levels at the time of order.



WATER STREET.
JAMESTOWN NEW YORK



		A	B	C	
QS	8446	BEAD KNOB	1-1/4"	1-1/8"	5/8"
QS	8447	BEAD KNOB	1-1/2"	1-5/16"	3/4"



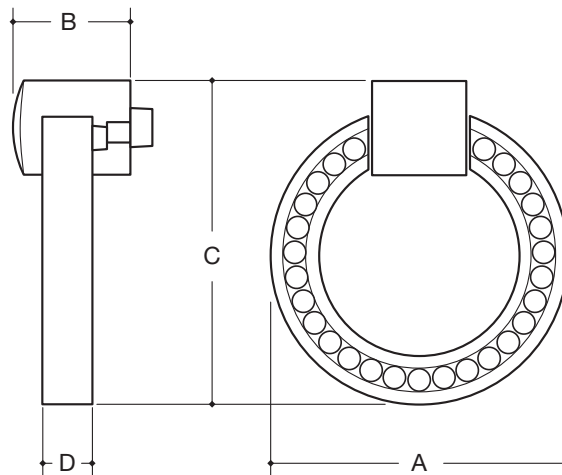
- Made to order. Lead times determined by the production levels at the time of order.
- QS • Available for 24 hour Quick Ship. See the Quick Ship price list for available finishes.



WATER STREET.
JAMESTOWN NEW YORK



		A	B	C	D
QS	15214 RING PULL	1-3/4"	9/16"	1-7/8"	3/16"



- Made to order. Lead times determined by the production levels at the time of order.
- QS • Available for 24 hour Quick Ship. See the Quick Ship price list for available finishes.



WATER STREET.
JAMESTOWN NEW YORK



FLAT

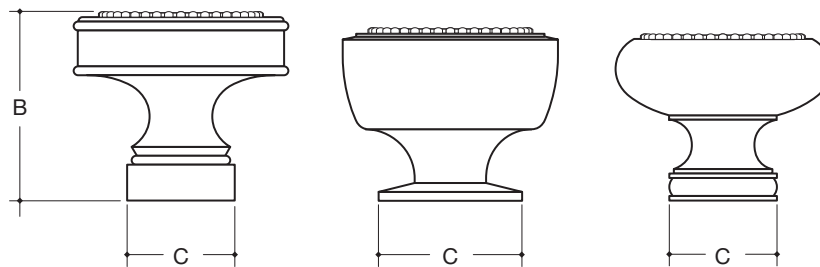
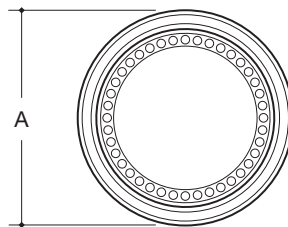


FONT



ROUND

		A	B	C
8401	FLAT BEAD KNOB	1-1/2"	1-5/16"	3/4"
8405	FONT BEAD KNOB	1-1/2"	1-3/16"	1"
8409	ROUND BEAD KNOB	1-1/2"	1-5/32"	3/4"



- Hand hammering or custom engraving available.
- Made to order. Lead times determined by the production levels at the time of order.



WATER STREET

JAMESTOWN NEW YORK



FLAT

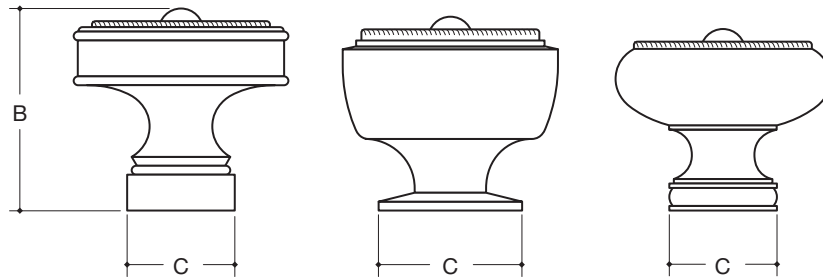
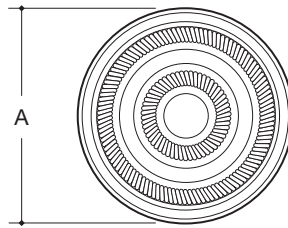


FONT



ROUND

		A	B	C
8402	FLAT ROPE KNOB	1-1/2"	1-13/32"	3/4"
8406	FONT ROPE KNOB	1-1/2"	1-3/16"	1"
8410	ROUND ROPE KNOB	1-1/2"	1-9/32"	3/4"



• Made to order. Lead times determined by the production levels at the time of order.



WATER STREET.

JAMESTOWN NEW YORK



FLAT

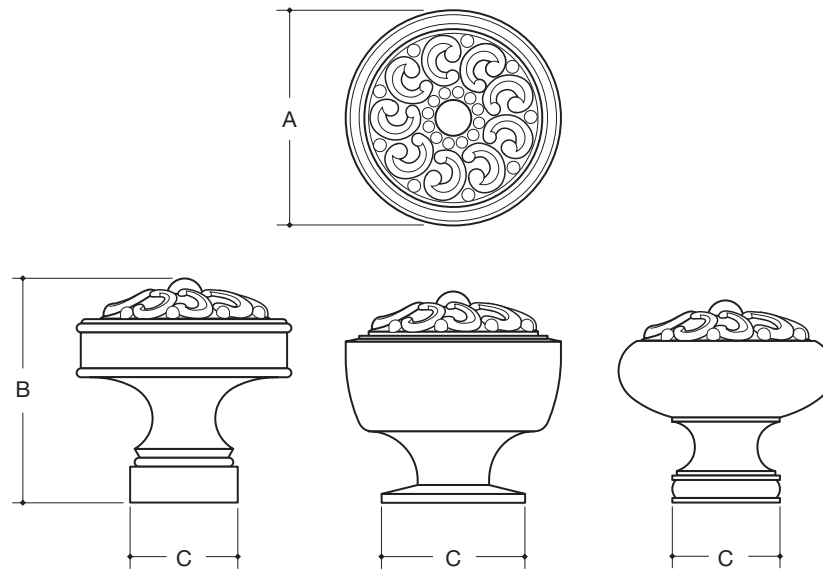


FONT



ROUND

		A	B	C
8400	FLAT PAISLEY KNOB	1-1/2"	1-9/16"	3/4"
8404	FONT PAISLEY KNOB	1-1/2"	1-1/2"	1"
8408	ROUND PAISLEY KNOB	1-1/2"	1-13/32"	3/4"



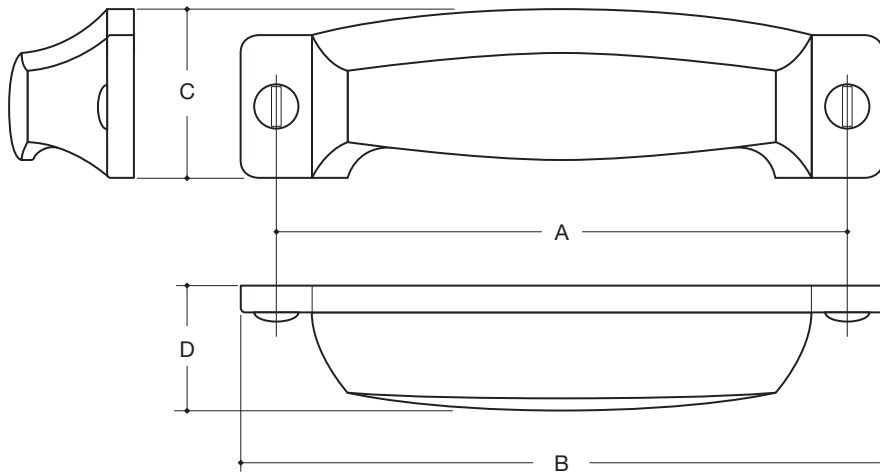
• Made to order. Lead times determined by the production levels at the time of order.



WATER STREET.
JAMESTOWN NEW YORK



		A	B	C	D	
QS	7377	CUP PULL	4"	4-1/2"	1-3/16"	7/8"



- ◆ Hand hammering available.
 - ◆ Made to order. Lead times determined by the production levels at the time of order.
- QS ◆ Available for 24 hour Quick Ship. See the Quick Ship price list for available finishes.

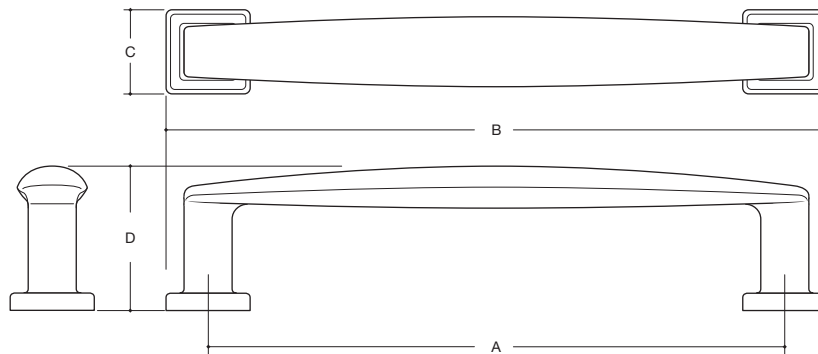


WATER STREET.

JAMESTOWN NEW YORK



			A	B	C	D
QS	7372	PULL	3-1/2"	4-3/32"	9/16"	1"
QS	7373	PULL	4-1/2"	5-1/4"	3/4"	1-1/4"
QS	7374	PULL	6"	6-7/8"	7/8"	1-1/2"
QS	7615	PULL	8"	8-7/8"	7/8"	1-1/2"
QS	7620	PULL	12"	12-7/8"	7/8"	1-1/2"
QS	7621	PULL	18"	18-7/8"	7/8"	1-1/2"
BB QS	7375	APPLIANCE PULL	8"	9-1/16"	1-1/16"	2"
BB QS	7376	APPLIANCE PULL	12"	13-1/8"	1-1/8"	2-1/16"
BB QS	7393	APPLIANCE PULL	18"	19-1/4"	1-1/4"	2-1/4"



- ◆ Hand hammering available.
- BB ◆ Available for back to back applications.
- ◆ Made to order. Lead times determined by the production levels at the time of order.
- QS ◆ Standard pulls available for 24 hour Quick Ship. See the Quick Ship price list for available finishes.



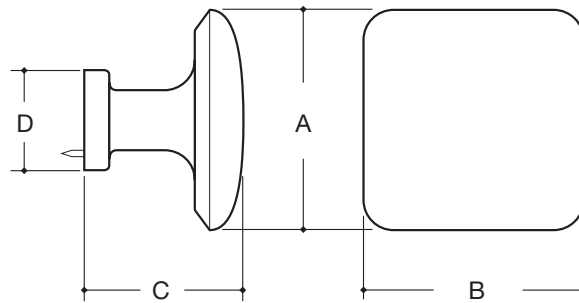
WATER STREET.

JAMESTOWN NEW YORK



HUDSON

		A & B	C	D	
QS	8448	KNOB	1"	15/16"	5/8"
QS	8449	KNOB	1-3/8"	1"	5/8"



- ◆ Hand hammering available.
 - ◆ Made to order. Lead times determined by the production levels at the time of order.
- QS ◆ Available for 24 hour Quick Ship. See the Quick Ship price list for available finishes.

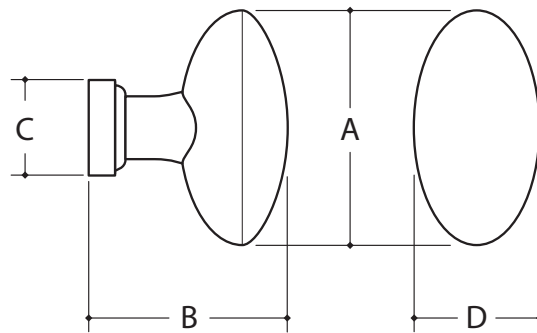


WATER STREET.
JAMESTOWN NEW YORK



HUDSON

		A	B	C	D
QS	8527 OVAL KNOB	1-13/32"	1-3/16"	9/16"	3/4"



- Made to order. Lead times determined by the production levels at the time of order.
- QS • Available for 24 hour Quick Ship. See the Quick Ship price list for available finishes.

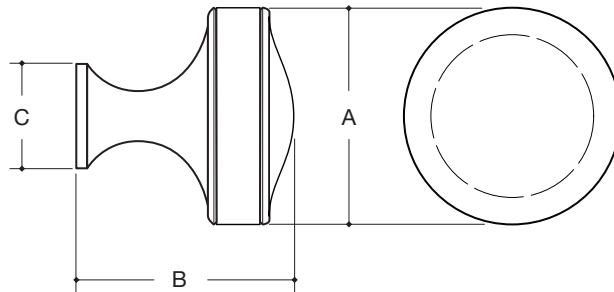


WATER STREET.

JAMESTOWN NEW YORK



		A	B	C	
QS	8560	KNOB	1"	1"	1/2"
QS	8561	KNOB	1-1/4"	1-1/4"	19/32"
QS	8562	KNOB	1-1/2"	1-1/2"	23/32"



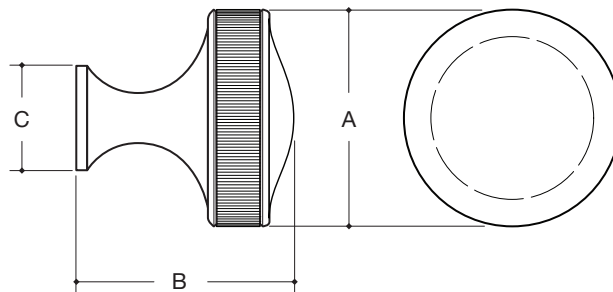
- ◆ Hand hammering available.
 - ◆ Made to order. Lead times determined by the production levels at the time of order.
- QS ◆ Available for 24 hour Quick Ship. See the Quick Ship price list for available finishes.



WATER STREET.
JAMESTOWN NEW YORK



	A	B	C
QS 8560-C COIN KNOB	1"	1"	1/2"
QS 8561-C COIN KNOB	1-1/4"	1-1/4"	19/32"
8562-C COIN KNOB	1-1/2"	1-1/2"	23/32"



- ◆ Hand hammering available.
 - ◆ Made to order. Lead times determined by the production levels at the time of order.
- QS ◆ Available for 24 hour Quick Ship. See the Quick Ship price list for available finishes.



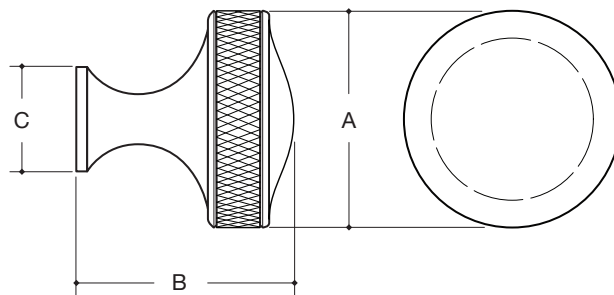
WATER STREET.

JAMESTOWN NEW YORK



HUDSON

		A	B	C
	8560-D DIAMOND KNOB	1"	1"	1/2"
QS	8561-D DIAMOND KNOB	1-1/4"	1-1/4"	19/32"
QS	8562-D DIAMOND KNOB	1-1/2"	1-1/2"	23/32"



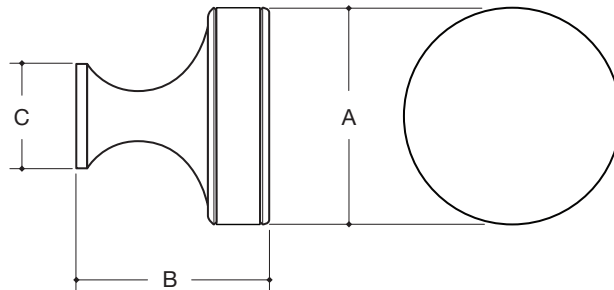
- ◆ Hand hammering available.
 - ◆ Made to order. Lead times determined by the production levels at the time of order.
- QS ◆ Available for 24 hour Quick Ship. See the Quick Ship price list for available finishes.



WATER STREET.
JAMESTOWN NEW YORK



		A	B	C
8565	FLAT KNOB	1-1/4"	1-1/8"	19/32"
8566	FLAT KNOB	1-1/2"	1-5/16"	23/32"



- Hand hammering or custom engraving available.
- Made to order. Lead times determined by the production levels at the time of order.

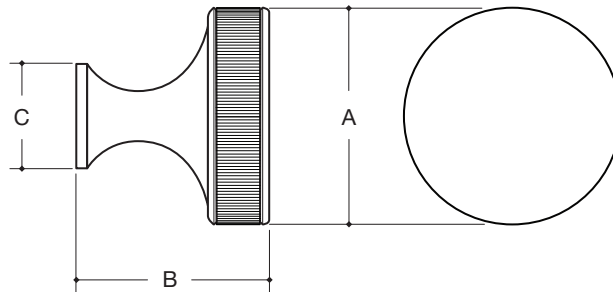


WATER STREET.
JAMESTOWN NEW YORK



HUDSON

		A	B	C
8565-C	COINED FLAT KNOB	1-1/4"	1-1/8"	19/32"
8566-C	COINED FLAT KNOB	1-1/2"	1-5/16"	23/32"



- Hand hammering or custom engraving available.
- Made to order. Lead times determined by the production levels at the time of order.

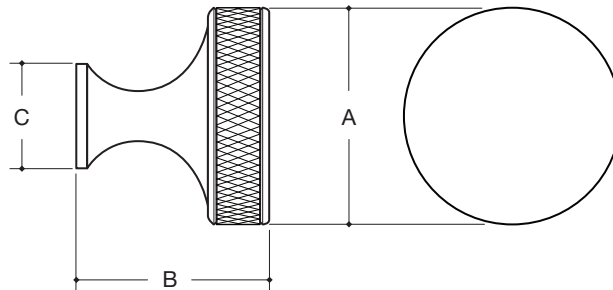


WATER STREET.

JAMESTOWN NEW YORK



		A	B	C
8565-D	DIAMOND FLAT KNOB	1-1/4"	1-1/8"	19/32"
8566-D	DIAMOND FLAT KNOB	1-1/2"	1-5/16"	23/32"



- Hand hammering or custom engraving available.
- Made to order. Lead times determined by the production levels at the time of order.

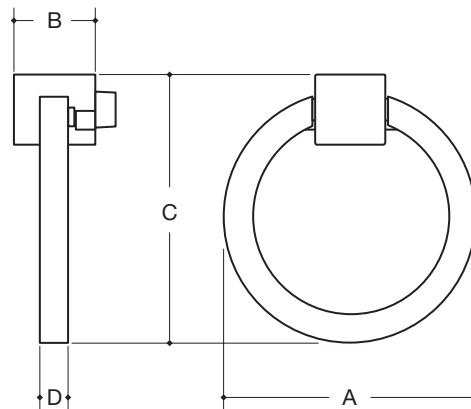


WATER STREET[®]

JAMESTOWN NEW YORK



		A	B	C	D	
QS	15199	RING PULL	1-3/4"	9/16"	1-7/8"	3/16"
QS	15586	RING PULL	2"	1/2"	2-5/32"	1/4"
QS	15609	RING PULL	2-1/2"	3/4"	2-5/8"	3/8"
QS	15610	RING PULL	3"	3/4"	3-1/8"	3/8"

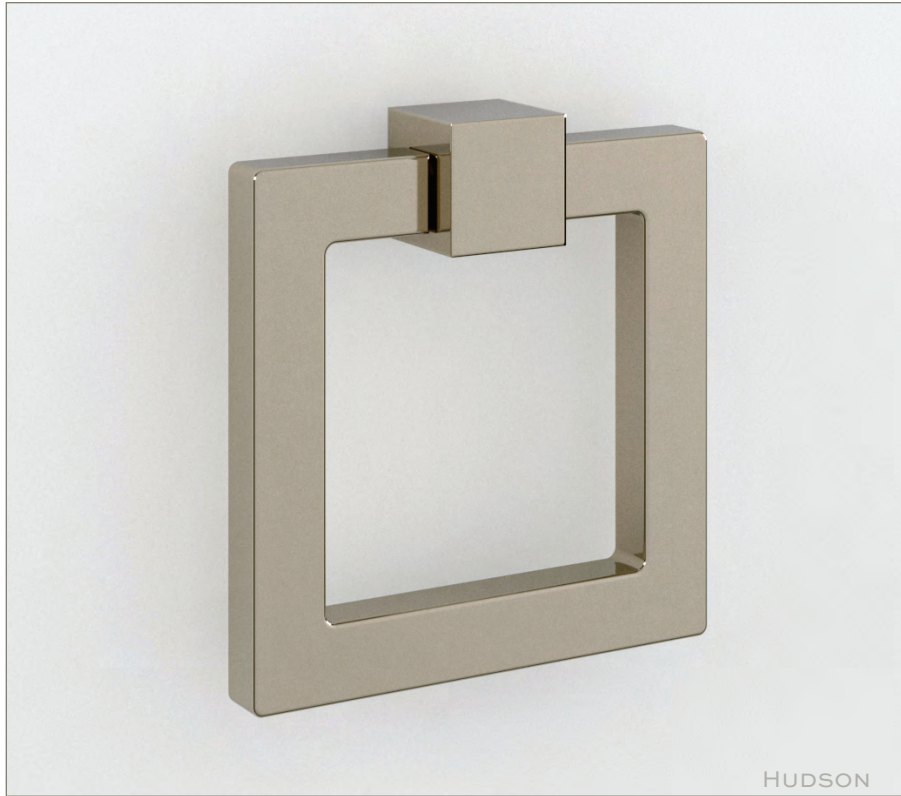


- ◆ Hand hammering available.
 - ◆ Made to order. Lead times determined by the production levels at the time of order.
- QS ◆ Available for 24 hour Quick Ship. See the Quick Ship price list for available finishes.

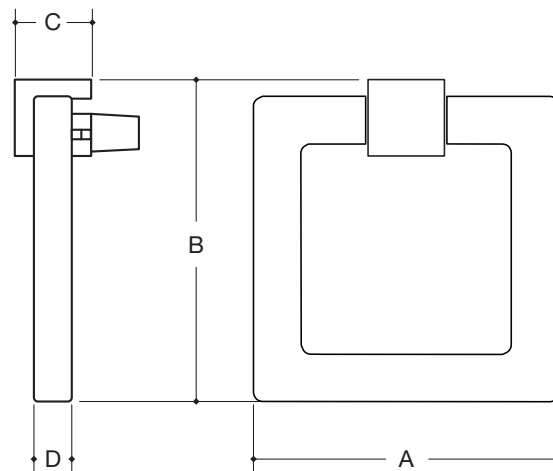


WATER STREET

JAMESTOWN NEW YORK



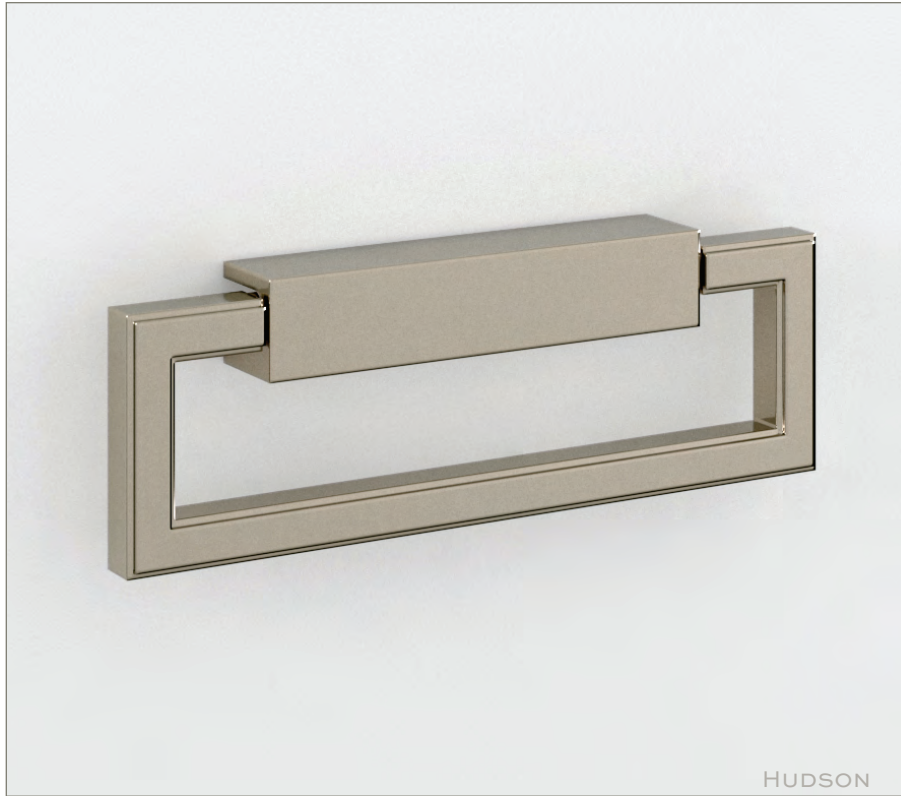
		A	B	C	D
QS	15623 RING PULL	2"	2-1/8"	1/2"	1/4"
QS	15620 RING PULL	3"	3-3/16"	3/4"	5/16"



- ◆ Hand hammering available.
 - ◆ Made to order. Lead times determined by the production levels at the time of order.
- QS ◆ Available for 24 hour Quick Ship. See the Quick Ship price list for available finishes.

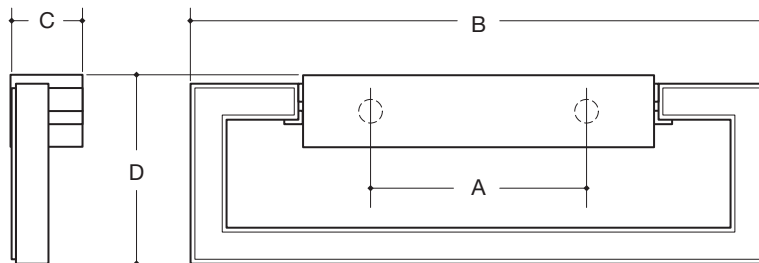


WATER STREET.
JAMESTOWN NEW YORK



HUDSON

	A	B	C	D
QS 15356 RING PULL	1-1/2"	4"	1/2"	1-5/16"



- Hand hammering available.
 - Made to order. Lead times determined by the production levels at the time of order.
- QS • Available for 24 hour Quick Ship. See the Quick Ship price list for available finishes.

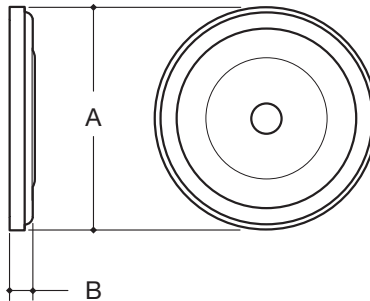


WATER STREET.

JAMESTOWN NEW YORK



		A	B
4384*	BACK PLATE	1-1/8"	5/32"
4345*	BACK PLATE	1-3/8"	5/32"
4345_B*	APPLIANCE BACK PLATE	1-3/8"	5/32"
4346*	BACK PLATE	1-5/8"	5/32"
4346_B*	APPLIANCE BACK PLATE	1-5/8"	5/32"



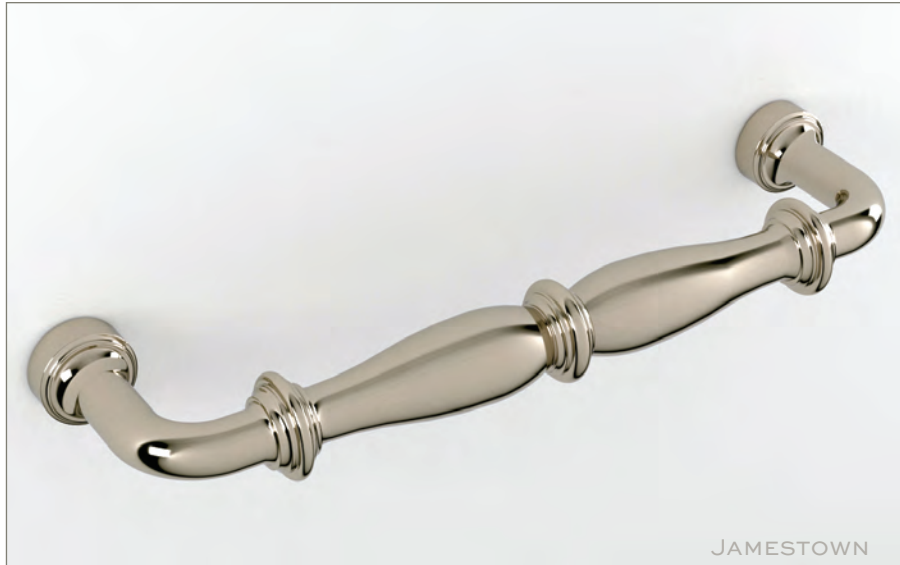
* Insert code -C, -D or -R after part number for knurling option.

◆ Made to order. Lead times determined by the production levels at the time of order.

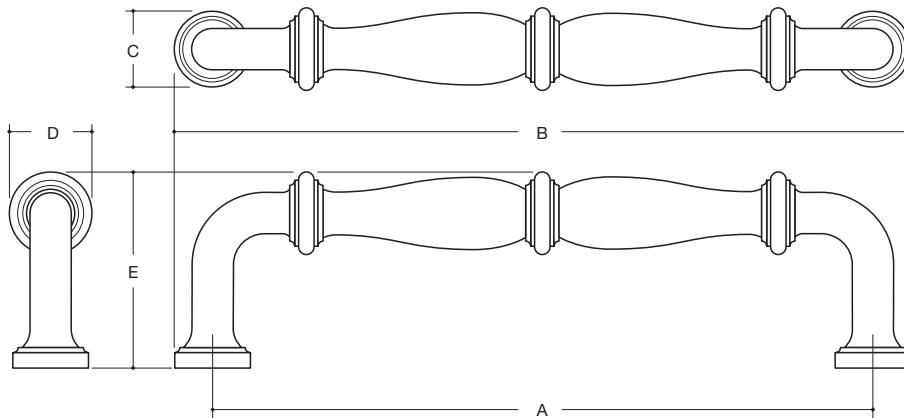


WATER STREET.

JAMESTOWN NEW YORK



		A	B	C	D	E
	7368 PULL	3"	3-7/16"	7/16"	1/2"	1-1/4"
	7369 PULL	4"	4-1/2"	1/2"	5/8"	1-11/16"
	7379 PULL	6"	6-11/16"	11/16"	3/4"	1-25/32"
BB	7370 APPLIANCE PULL	8"	8-11/16"	15/16"	1"	2-3/8"
BB	7371 APPLIANCE PULL	12"	12-15/16"	15/16"	1-3/16"	2-1/2"
BB	7390 APPLIANCE PULL	18"	18-15/16"	15/16"	1-1/4"	2-7/16"

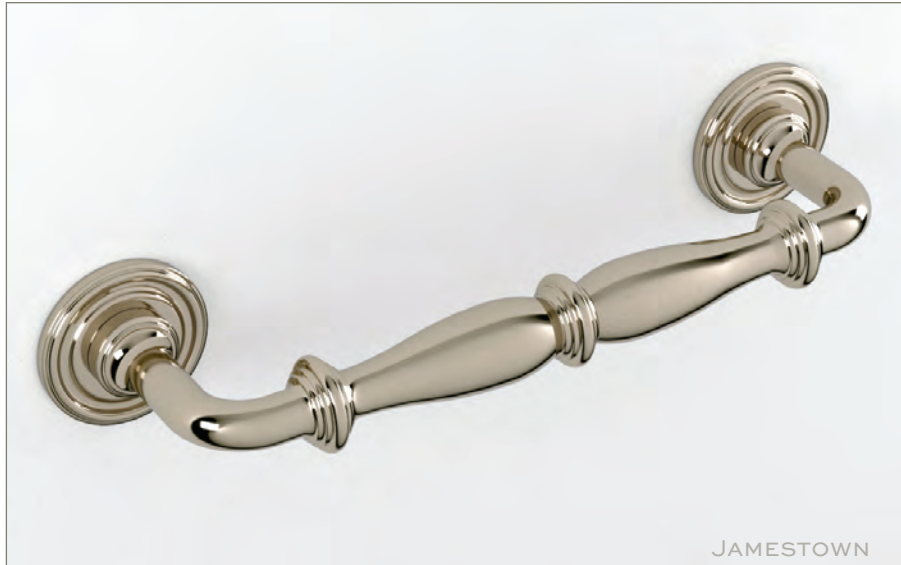


- Hand hammering available.
- BB • Available for back to back applications. Back plates required on glass door applications.
- Made to order. Lead times determined by the production levels at the time of order.



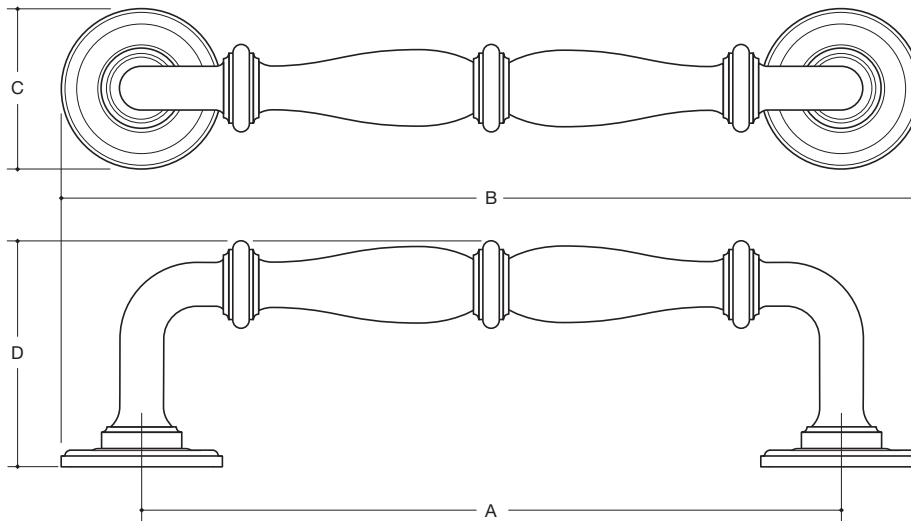
WATER STREET.

JAMESTOWN NEW YORK



JAMESTOWN

		A	B	C	D	
	7368 / 4384	PULL & BACK PLATE	3"	4-1/8"	1-1/8"	1-11/32"
	7369 / 4384	PULL & BACK PLATE	4"	5-1/8"	1-1/8"	1-23/32"
	7379 / 4345	PULL & BACK PLATE	6"	7-3/8"	1-3/8"	1-15/16"
BB	7370 / 4346_B	PULL & BACK PLATE	8"	9-5/8"	1-5/8"	2-17/32"
BB	7371 / 4346_B	PULL & BACK PLATE	12"	13-5/8"	1-5/8"	2-21/32"
BB	7390 / 4346_B	PULL & BACK PLATE	18"	19-5/8"	1-5/8"	2-19/32"



- ◆ Hand hammering available.
- BB ◆ Available for back to back applications. Back plates required on glass door applications.
- ◆ Made to order. Lead times determined by the production levels at the time of order.

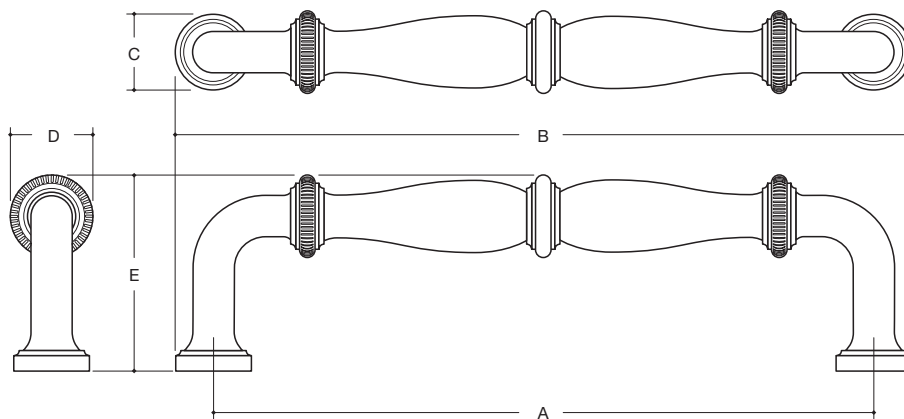


WATER STREET.

JAMESTOWN NEW YORK



		A	B	C	D	E
	7368* PULL	3"	3-7/16"	7/16"	1/2"	1-1/4"
	7369* PULL	4"	4-1/2"	1/2"	5/8"	1-11/16"
	7379* PULL	6"	6-11/16"	11/16"	3/4"	1-25/32"
BB	7370* APPLIANCE PULL	8"	8-11/16"	15/16"	1"	2-3/8"
BB	7371* APPLIANCE PULL	12"	12-15/16"	15/16"	1-3/16"	2-1/2"
BB	7390* APPLIANCE PULL	18"	18-15/16"	15/16"	1-1/4"	2-7/16"



* Insert code -C, -D or -R after part number for knurling option.

• Hand hammering available.

BB • Available for back to back applications. Back plates required on glass door applications.

• Made to order. Lead times determined by the production levels at the time of order.

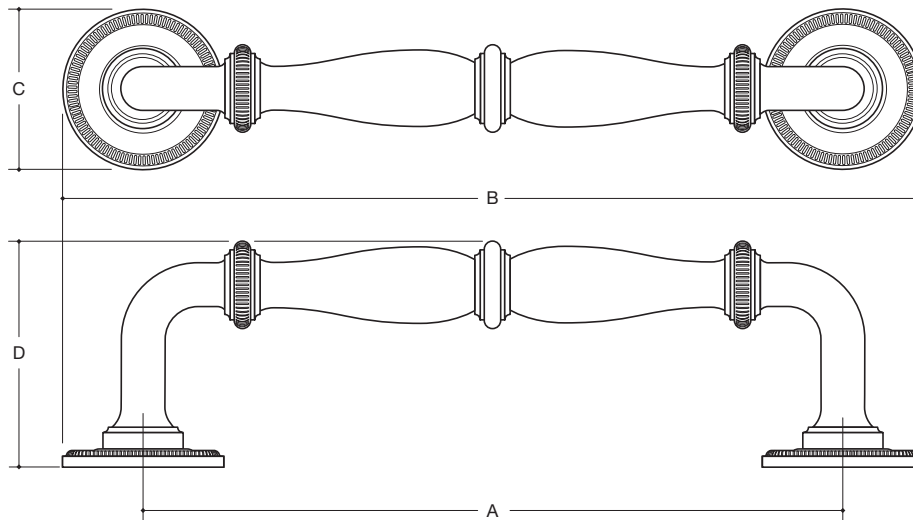


WATER STREET.

JAMESTOWN NEW YORK



		A	B	C	D	
	7368* / 4384*	PULL & BACK PLATE	3"	4-1/8"	1-1/8"	1-11/32"
	7369* / 4384*	PULL & BACK PLATE	4"	5-1/8"	1-1/8"	1-23/32"
	7379* / 4345*	PULL & BACK PLATE	6"	7-3/8"	1-3/8"	1-15/16"
BB	7370* / 4346_B*	PULL & BACK PLATE	8"	9-5/8"	1-5/8"	2-17/32"
BB	7371* / 4346_B*	PULL & BACK PLATE	12"	13-5/8"	1-5/8"	2-21/32"
BB	7390* / 4346_B*	PULL & BACK PLATE	18"	19-5/8"	1-5/8"	2-19/32"



* Insert code -C, -D or -R after part number for knurling option.

• Hand hammering available.

BB • Available for back to back applications. Back plates required on glass door applications.

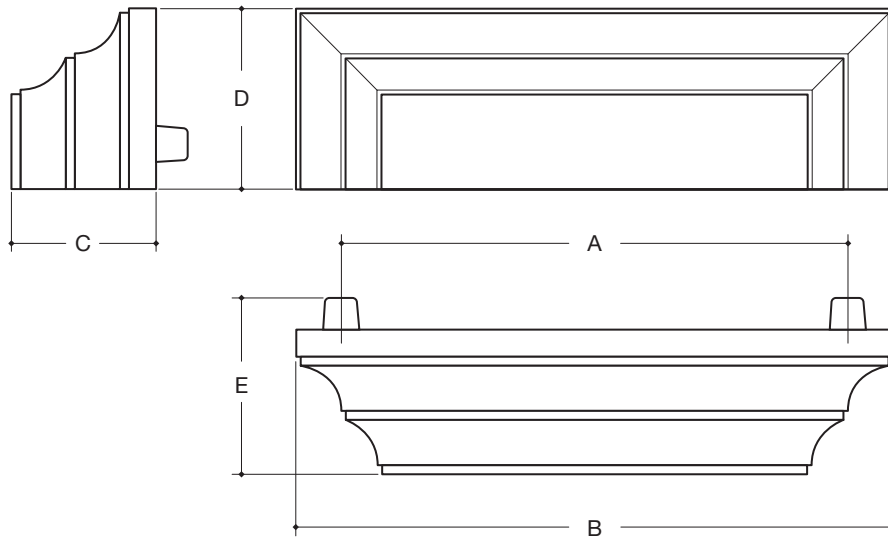
• Made to order. Lead times determined by the production levels at the time of order.



WATER STREET.
JAMESTOWN NEW YORK



		A	B	C	D	E
7378	CUP PULL	3-1/2"	4-1/8"	1"	1-1/4"	1-7/32"



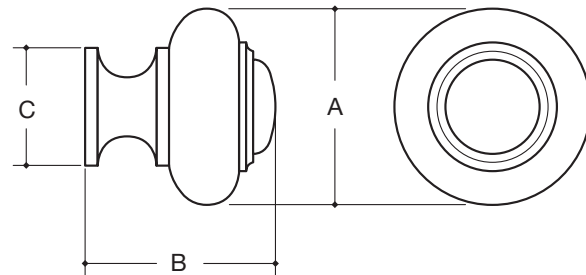
- Hand hammering available.
- Made to order. Lead times determined by the production levels at the time of order.



WATER STREET.
JAMESTOWN NEW YORK



		A	B	C
8211	KNOB	1"	15/16"	5/8"
8504	KNOB	1-1/4"	1-7/32"	3/4"



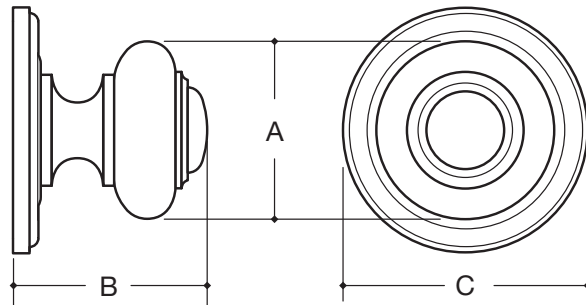
♦ Made to order. Lead times determined by the production levels at the time of order.



WATER STREET.
JAMESTOWN NEW YORK



		A	B	C
8504 W/ 4345	KNOB & BACK PLATE	1-1/4"	1-3/32"	1-3/8"



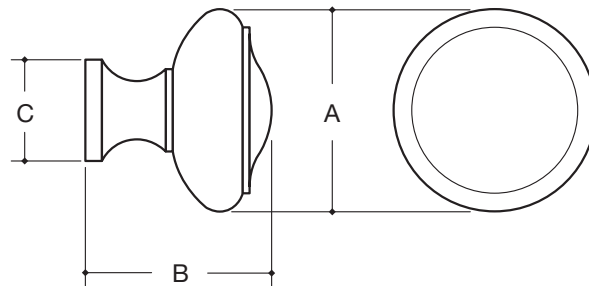
♦ Made to order. Lead times determined by the production levels at the time of order.



WATER STREET.
JAMESTOWN NEW YORK



		A	B	C
8413	KNOB	1-3/32"	1"	9/16"
8500	KNOB	1-1/4"	1-5/32"	5/8"
8501	KNOB	1-1/2"	1-3/8"	3/4"



◆ Made to order. Lead times determined by the production levels at the time of order.

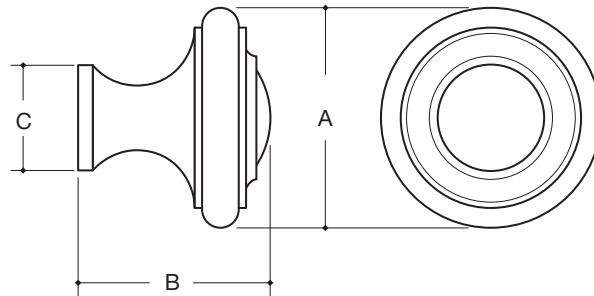


WATER STREET.

JAMESTOWN NEW YORK



		A	B	C
8516	KNOB	1"	1"	5/8"
8502	KNOB	1-1/4"	1-1/8"	19/32"
8503	KNOB	1-1/2"	1-5/16"	11/16"



♦ Made to order. Lead times determined by the production levels at the time of order.

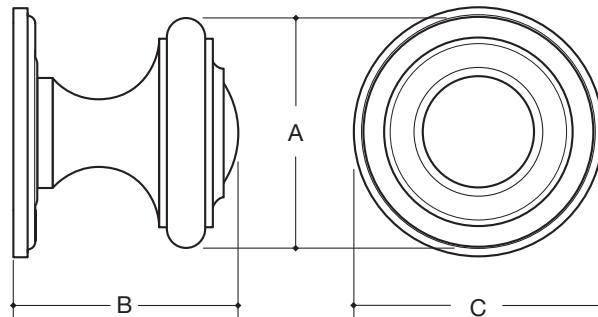


WATER STREET.

JAMESTOWN NEW YORK



			A	B	C
8516	W/ 4384*	KNOB & BACK PLATE	1"	1-5/32"	1-1/8"
8502	W/ 4345*	KNOB & BACK PLATE	1-1/4"	1-9/32"	1-3/8"
8503	W/ 4346*	KNOB & BACK PLATE	1-1/2"	1-15/32"	1-5/8"



- * Insert code -C, -D or -R after part number for knurling option on the back plate.
- Made to order. Lead times determined by the production levels at the time of order.

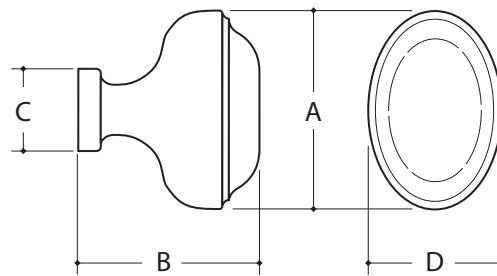


WATER STREET.
JAMESTOWN NEW YORK



JAMESTOWN

	A	B	C	D
8529 OVAL KNOB	1-3/32"	1"	9/16"	15/16"



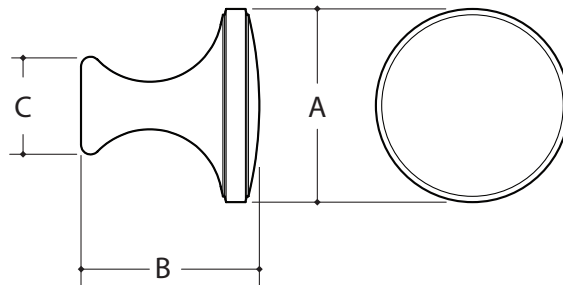
♦ Made to order. Lead times determined by the production levels at the time of order.



WATER STREET.
JAMESTOWN NEW YORK



		A	B	C
8551	KNOB	1-1/4"	1-5/32"	5/8"
8552	KNOB	1-1/2"	1-3/8"	3/4"



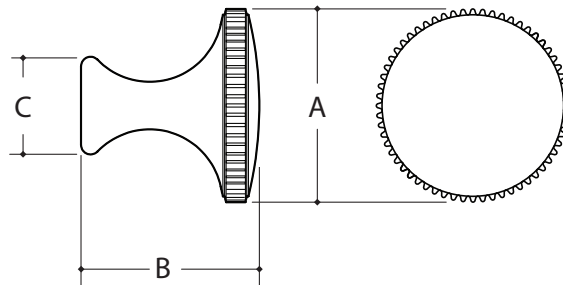
- Hand hammering or custom engraving available.
- Made to order. Lead times determined by the production levels at the time of order.



WATER STREET.
JAMESTOWN NEW YORK



	A	B	C
8551-C COIN KNOB	1-1/4"	1-5/32"	5/8"
8552-C COIN KNOB	1-1/2"	1-3/8"	3/4"



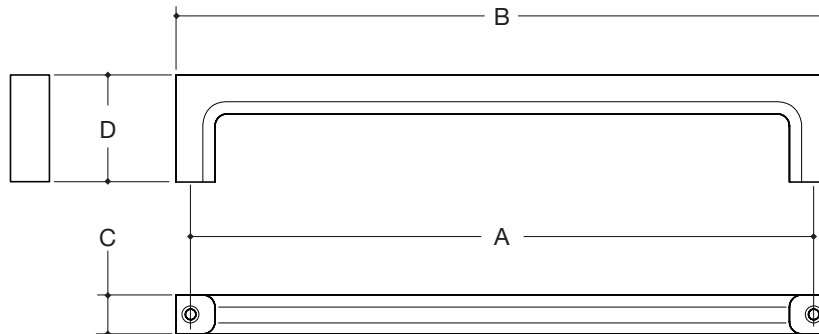
- Hand hammering or custom engraving available.
- Made to order. Lead times determined by the production levels at the time of order.



WATER STREET.
JAMESTOWN NEW YORK



		A	B	C	D
	7860 PULL	4-1/2"	4-7/8"	1/2"	1-3/8"
	7861 PULL	6"	6-3/8"	1/2"	1-3/8"
	7862 PULL	8"	8-3/8"	1/2"	1-3/8"
	7863 PULL	12"	12-3/8"	1/2"	1-3/8"
	7864 PULL	18"	18-3/8"	1/2"	1-3/8"
BB	7870 APPLIANCE PULL	8"	8-1/2"	5/8"	1-5/8"
BB	7871 APPLIANCE PULL	12"	12-1/2"	5/8"	1-5/8"
BB	7872 APPLIANCE PULL	18"	18-1/2"	5/8"	1-5/8"



- ◆ Hand hammering available.
- BB ◆ Available for back to back applications. Back plates required on glass door applications.
- ◆ Custom lengths available upon request. Extended lead times apply.
- ◆ Made to order. Lead times determined by the production levels at the time of order.

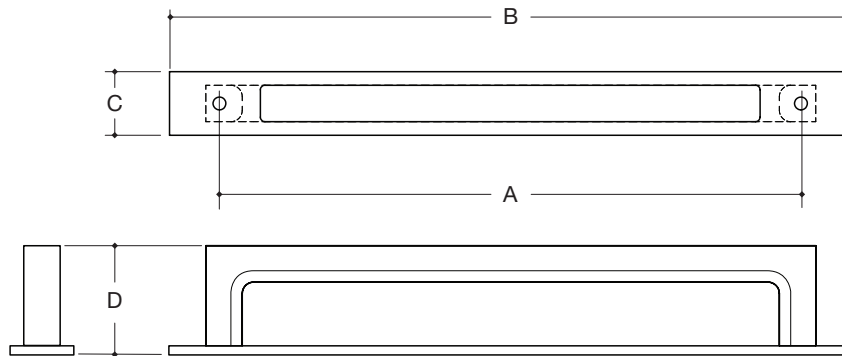


WATER STREET

JAMESTOWN NEW YORK



			A	B	C	D	
	7860	W/ 4440	PULL & BACK PLATE	4-1/2"	5-7/8"	7/8"	1-1/2"
	7861	W/ 4441	PULL & BACK PLATE	6"	7-3/8"	7/8"	1-1/2"
	7862	W/ 4442	PULL & BACK PLATE	8"	9-3/8"	7/8"	1-1/2"
	7863	W/ 4443	PULL & BACK PLATE	12"	13-3/8"	7/8"	1-1/2"
	7864	W/ 4444	PULL & BACK PLATE	18"	19-3/8"	7/8"	1-1/2"
BB	7870	W/ 4462	APPL. PULL & BACK PLATE	8"	9-3/4"	1"	1-3/4"
BB	7871	W/ 4463	APPL. PULL & BACK PLATE	12"	13-3/4"	1"	1-3/4"
BB	7872	W/ 4464	APPL. PULL & BACK PLATE	18"	19-3/4"	1"	1-3/4"



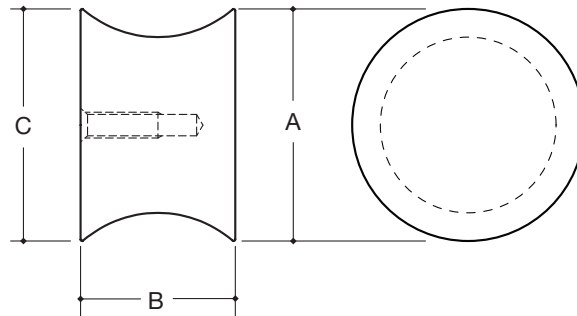
- ◆ Hand hammering available on pulls only.
- BB ◆ Available for back to back applications. Back plates required on glass door applications.
- ◆ Custom lengths available upon request - pulls only. Extended lead times apply.
- ◆ Made to order. Lead times determined by the production levels at the time of order.



WATER STREET.
JAMESTOWN NEW YORK



		A	B	C
8540	ROUND KNOB	1-1/4"	7/8"	1-1/4"
8541	ROUND KNOB	1-1/2"	1"	1-1/2"



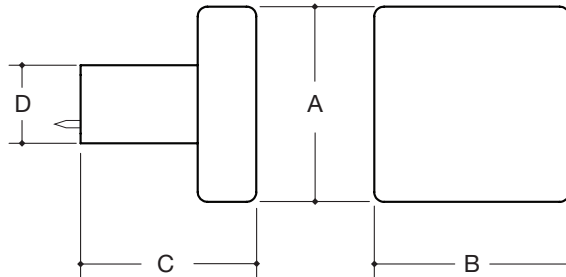
- Hand hammering or custom engraving available.
- Made to order. Lead times determined by the production levels at the time of order.



WATER STREET.
JAMESTOWN NEW YORK



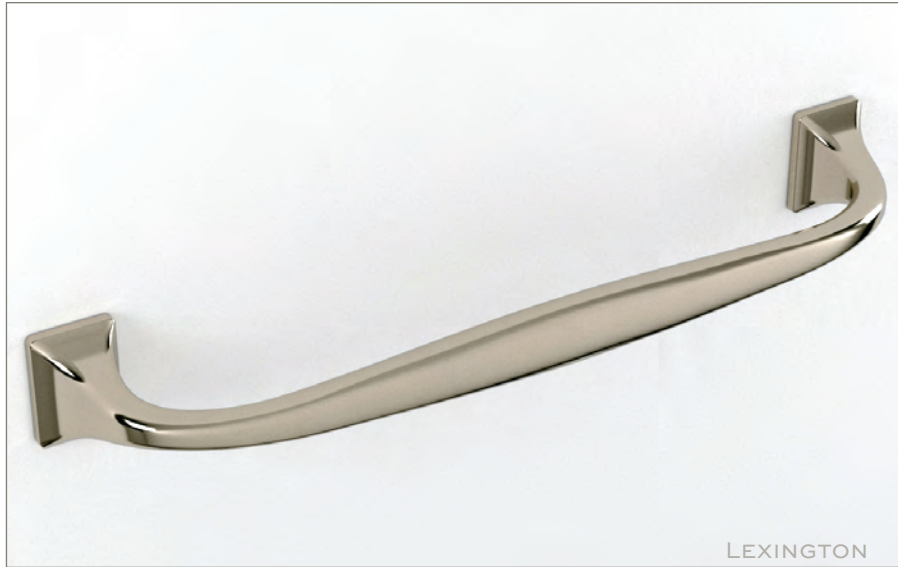
		A	B	C	D
8641	SQUARE KNOB	1-1/4"	1-1/4"	1-1/8"	1/2"
8643	SQUARE KNOB	1-1/2"	1-1/2"	1-3/8"	5/8"



- Hand hammering or custom engraving available.
- Made to order. Lead times determined by the production levels at the time of order.

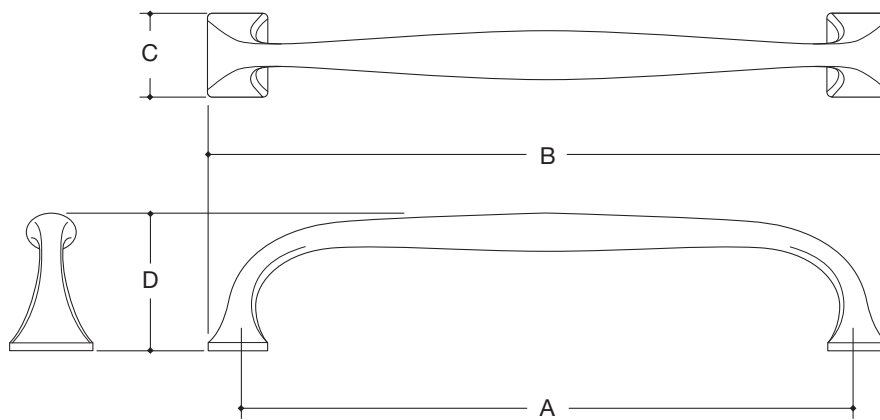


WATER STREET.
JAMESTOWN NEW YORK



LEXINGTON

			A	B	C	D
QS	7480	PULL	4"	4-13/16"	1"	1-11/16"
QS	7481	PULL	6"	6-3/4"	1"	1-11/16"
	7487	PULL	10"	10-7/8"	1"	1-3/4"
	7488	PULL	12"	12-7/8"	1"	1-3/4"
BB QS	7482	APPLIANCE PULL	8"	8-3/4"	1-3/32"	1-3/4"
BB	7483	APPLIANCE PULL	10"	10-7/8"	1-3/16"	1-7/8"
BB	7484	APPLIANCE PULL	12"	13-1/4"	1-3/8"	2-9/32"
BB	7485	APPLIANCE PULL	18"	19-1/4"	1-3/8"	2-5/8"



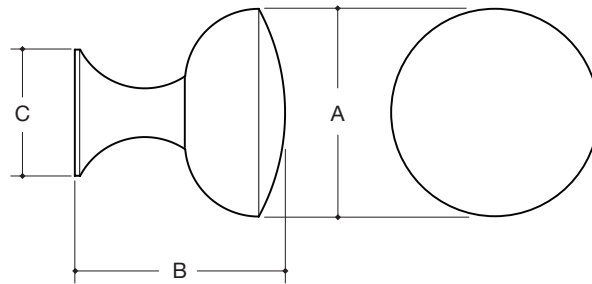
- ◆ Hand hammering available.
- BB ◆ Available for back to back applications. Note: set screws will be visible on the sides of pull legs.
- ◆ Made to order. Lead times determined by the production levels at the time of order.
- QS ◆ Standard pulls available for 24 hour Quick Ship. See the Quick Ship price list for available finishes.



WATER STREET.
JAMESTOWN NEW YORK



		A	B	C	
QS	8631	KNOB	1-1/4"	1-1/4"	3/4"
	8633	KNOB	1-1/2"	1-1/2"	29/32"



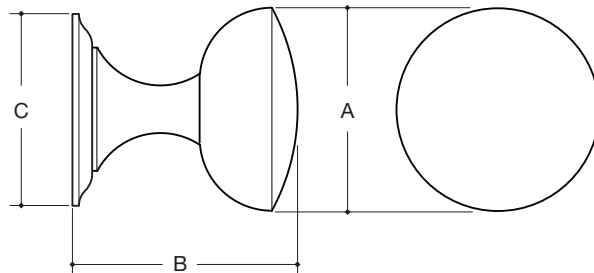
- Hand hammering available.
 - Made to order. Lead times determined by the production levels at the time of order.
- QS • Available for 24 hour Quick Ship. See the Quick Ship price list for available finishes.



WATER STREET.
JAMESTOWN NEW YORK



		A	B	C
8631 W/ 4407	KNOB & BACK PLATE	1-1/4"	1-3/8"	1-3/16"
8633 W/ 4408	KNOB & BACK PLATE	1-1/2"	1-5/8"	1-13/32"



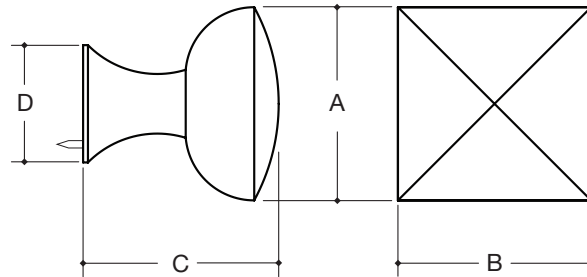
- Hand hammering available on knobs only.
- Made to order. Lead times determined by the production levels at the time of order.



WATER STREET.
JAMESTOWN NEW YORK



		A	B	C	D
8637	KNOB	1-1/4"	1-1/4"	1-1/4"	3/4"
8639	KNOB	1-1/2"	1-1/2"	1-1/2"	7/8"



• Made to order. Lead times determined by the production levels at the time of order.

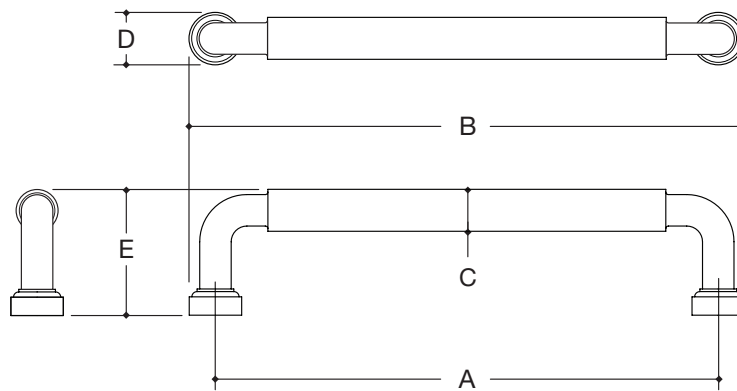


WATER STREET

JAMESTOWN NEW YORK



			A	B	C	D	E
QS	7501	PULL	4"	4-5/8"	1/2"	5/8"	1-1/2"
QS	7502	PULL	6"	6-5/8"	1/2"	5/8"	1-1/2"
QS	7503	PULL	8"	8-5/8"	1/2"	5/8"	1-1/2"
QS	7504	PULL	10"	10-5/8"	1/2"	5/8"	1-1/2"
QS	7505	PULL	12"	12-5/8"	1/2"	5/8"	1-1/2"
	7507	PULL	18"	18-5/8"	1/2"	5/8"	1-1/2"
	7508	PULL	24"	24-5/8"	1/2"	5/8"	1-1/2"
	7509	PULL	30"	30-5/8"	1/2"	5/8"	1-1/2"
BB	7513	APPLIANCE PULL	8"	8-13/16"	5/8"	13/16"	1-7/8"
BB QS	7515	APPLIANCE PULL	12"	12-13/16"	5/8"	13/16"	1-7/8"
BB QS	7516	APPLIANCE PULL	18"	18-13/16"	5/8"	13/16"	1-7/8"



- ◆ Hand hammering available.
- BB ◆ Available for back to back applications. Back plates required on glass door applications.
- ◆ Made to order. Lead times determined by the production levels at the time of order.
- QS ◆ Standard pulls available for 24 hour Quick Ship. See the Quick Ship price list for available finishes.

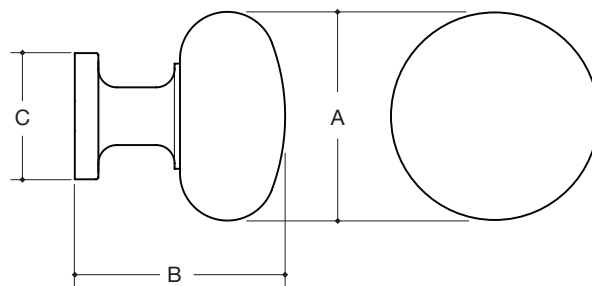


WATER STREET.

JAMESTOWN NEW YORK



		A	B	C	
QS	8620	KNOB	1"	1"	19/32"
QS	8621	KNOB	1-1/4"	1-1/4"	3/4"
	8622	KNOB	1-1/2"	1-1/2"	29/32"



- Made to order. Lead times determined by the production levels at the time of order.
- QS • Available for 24 hour Quick Ship. See the Quick Ship price list for available finishes.

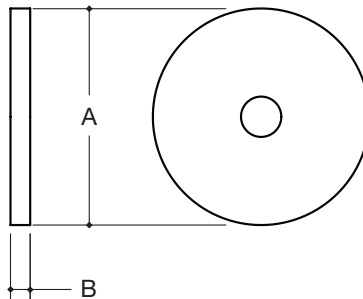


WATER STREET®

JAMESTOWN NEW YORK



		A	B	
QS	4399	BACK PLATE	1-3/8"	1/8"
	4399_B	APPLIANCE BACK PLATE	1-3/8"	1/8"
	4416	BACK PLATE	1-5/8"	1/8"
	4416_B	APPLIANCE BACK PLATE	1-5/8"	1/8"



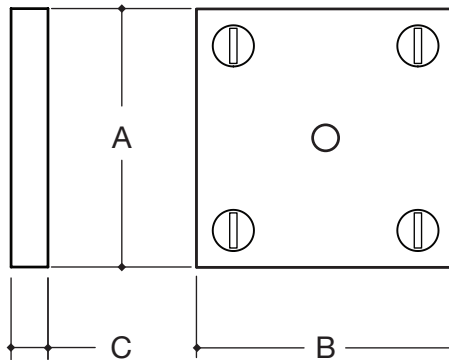
- Made to order. Lead times determined by the production levels at the time of order.
- Available for 24 hour Quick Ship. See the Quick Ship price list for available finishes.



WATER STREET.
JAMESTOWN NEW YORK



		A	B	C
	4415 BACK PLATE	1-3/4"	1-3/4"	1/4"
	4415_B APPLIANCE BACK PLATE	1-3/4"	1-3/4"	1/4"
QS	4415_S BACK PLATE, SURFACE MOUNT	1-3/4"	1-3/4"	1/4"
	4415_BS APPLIANCE BACK PLATE, SURFACE MOUNT	1-3/4"	1-3/4"	1/4"

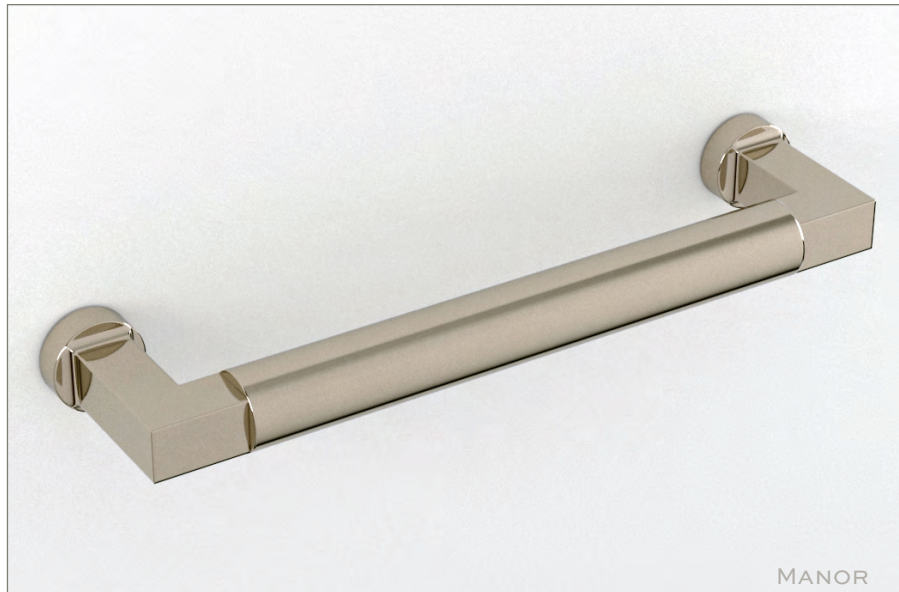


- Made to order. Lead times determined by the production levels at the time of order.
- QS • Available for 24 hour Quick Ship. See the Quick Ship price list for available finishes.

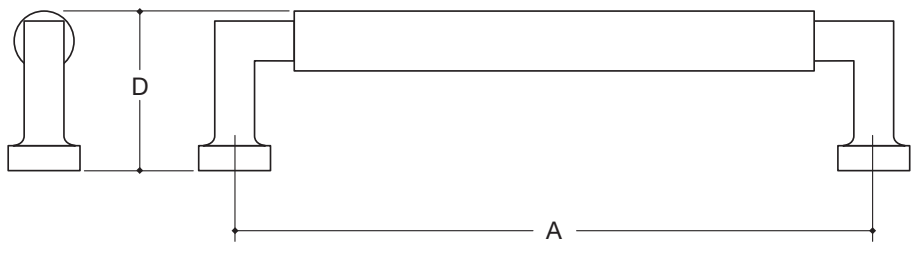
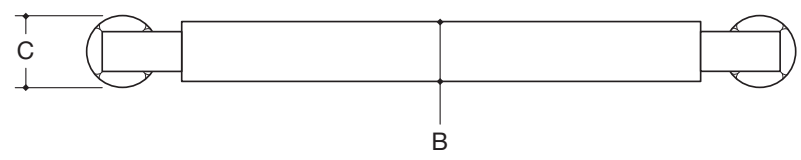


WATER STREET.

JAMESTOWN NEW YORK



		A	B	C	D	
QS	7791	PULL	4-1/2"	5/8"	3/4"	1-5/8"
QS	7792	PULL	6"	5/8"	3/4"	1-5/8"
QS	7793	PULL	8"	5/8"	3/4"	1-5/8"
QS	7794	PULL	10"	5/8"	3/4"	1-5/8"
QS	7795	PULL	12"	5/8"	3/4"	1-5/8"
QS	7796	PULL	18"	5/8"	3/4"	1-5/8"
	7827	PULL	24"	5/8"	3/4"	1-5/8"
	7828	PULL	30"	5/8"	3/4"	1-5/8"



- Hand hammering available. To order split finishes, specify legs x spindle.
 - Made to order. Lead times determined by the production levels at the time of order.
- QS • Available for 24 hour Quick Ship. See the Quick Ship price list for available finishes.

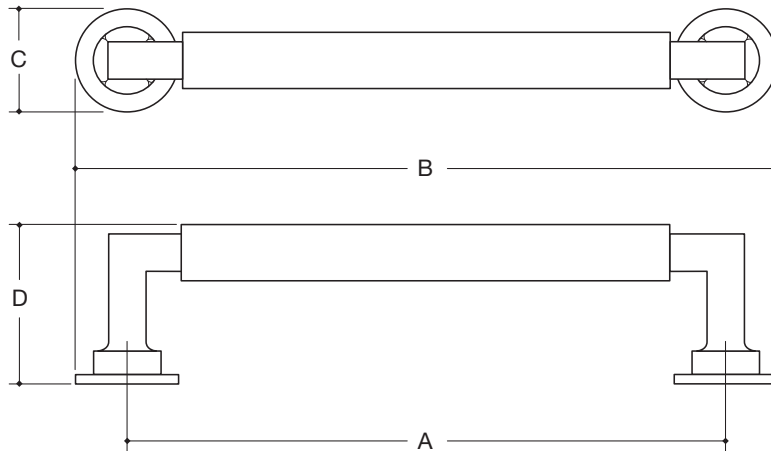


WATER STREET.

JAMESTOWN NEW YORK



			A	B	C	D
7791	W/ 4399	PULL & BACK PLATE	4-1/2"	5-7/8"	1-3/8"	1-3/4"
7792	W/ 4399	PULL & BACK PLATE	6"	7-3/8"	1-3/8"	1-3/4"
7793	W/ 4399	PULL & BACK PLATE	8"	9-3/8"	1-3/8"	1-3/4"
7794	W/ 4399	PULL & BACK PLATE	10"	11-3/8"	1-3/8"	1-3/4"
7795	W/ 4399	PULL & BACK PLATE	12"	13-3/8"	1-3/8"	1-3/4"
7796	W/ 4399	PULL & BACK PLATE	18"	19-3/8"	1-3/8"	1-3/4"
7827	W/ 4399	PULL & BACK PLATE	24"	25-3/8"	1-3/8"	1-3/4"
7828	W/ 4399	PULL & BACK PLATE	30"	31-3/8"	1-3/8"	1-3/4"

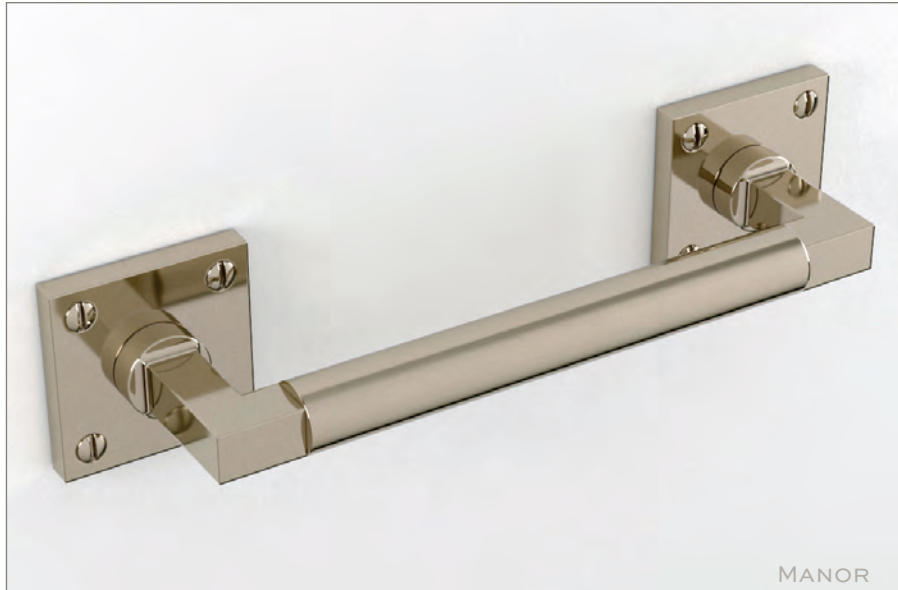


- Hand hammering available. To order split finishes, specify legs x spindle.
- Made to order. Lead times determined by the production levels at the time of order.

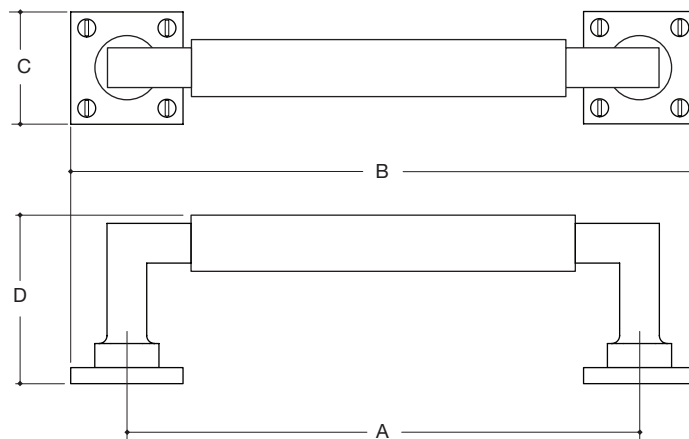


WATER STREET

JAMESTOWN NEW YORK



			A	B	C	D
7791	W/ 4415_S	PULL & BACK PLATE	4-1/2"	6-1/4"	1-3/4"	2"
7792	W/ 4415_S	PULL & BACK PLATE	6"	7-3/4"	1-3/4"	2"
7793	W/ 4415_S	PULL & BACK PLATE	8"	9-3/4"	1-3/4"	2"
7794	W/ 4415_S	PULL & BACK PLATE	10"	11-3/4"	1-3/4"	2"
7795	W/ 4415_S	PULL & BACK PLATE	12"	13-3/4"	1-3/4"	2"
7796	W/ 4415_S	PULL & BACK PLATE	18"	19-3/4"	1-3/4"	2"
7827	W/ 4415_S	PULL & BACK PLATE	24"	25-3/4"	1-3/4"	2"
7828	W/ 4415_S	PULL & BACK PLATE	30"	31-3/3"	1-3/4"	2"

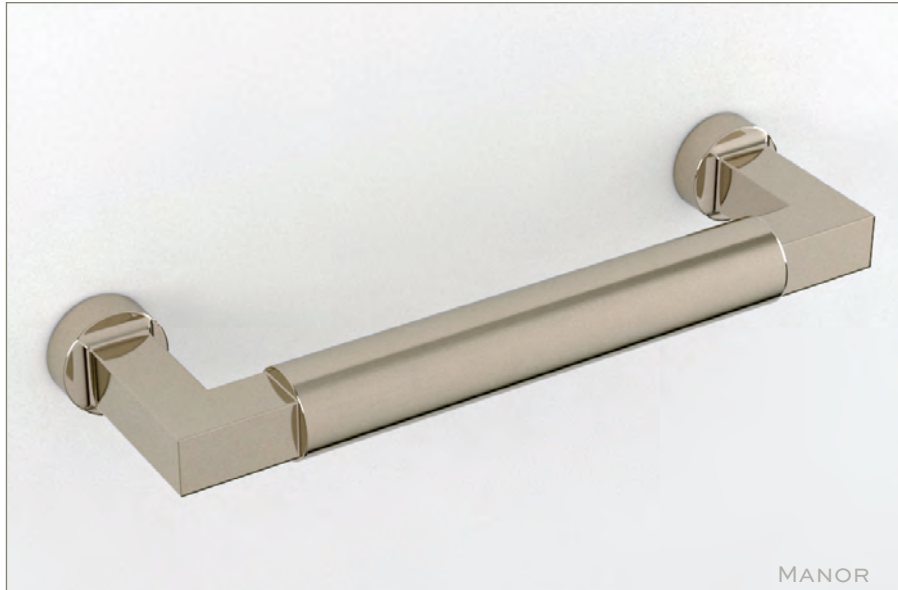


- Hand hammering available. To order split finishes, specify legs x spindle.
- Made to order. Lead times determined by the production levels at the time of order.

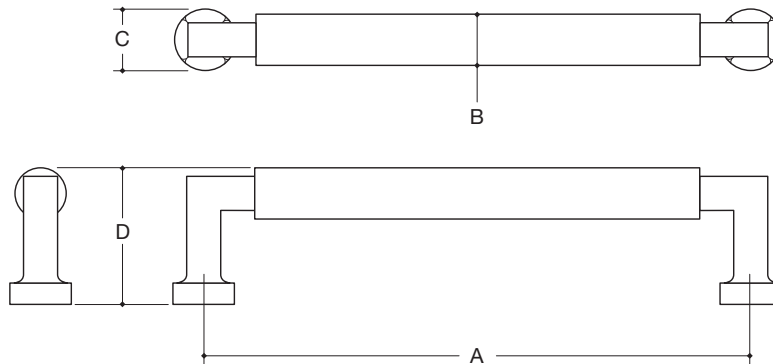


WATER STREET.

JAMESTOWN NEW YORK



		A	B	C	D	
QS	7771	PULL	4-1/2"	3/4"	7/8"	2"
QS	7772	PULL	6"	3/4"	7/8"	2"
QS	7773	PULL	8"	3/4"	7/8"	2"
QS	7774	PULL	10"	3/4"	7/8"	2"
QS	7775	PULL	12"	3/4"	7/8"	2"
QS	7776	PULL	18"	3/4"	7/8"	2"
BB	7813	APPLIANCE PULL	8"	7/8"	1-1/16"	2-3/8"
BB	7814	APPLIANCE PULL	10"	7/8"	1-1/16"	2-3/8"
BB	7815	APPLIANCE PULL	12"	7/8"	1-1/16"	2-3/8"
BB	7816	APPLIANCE PULL	18"	7/8"	1-1/16"	2-3/8"



- ◆ Hand hammering available. To order split finishes, specify legs x spindle.
- BB ◆ Available for back to back applications. Back plates required on glass door applications.
- ◆ Made to order. Lead times determined by the production levels at the time of order.
- QS ◆ Standard pulls available for 24 hour Quick Ship. See the Quick Ship price list for available finishes.

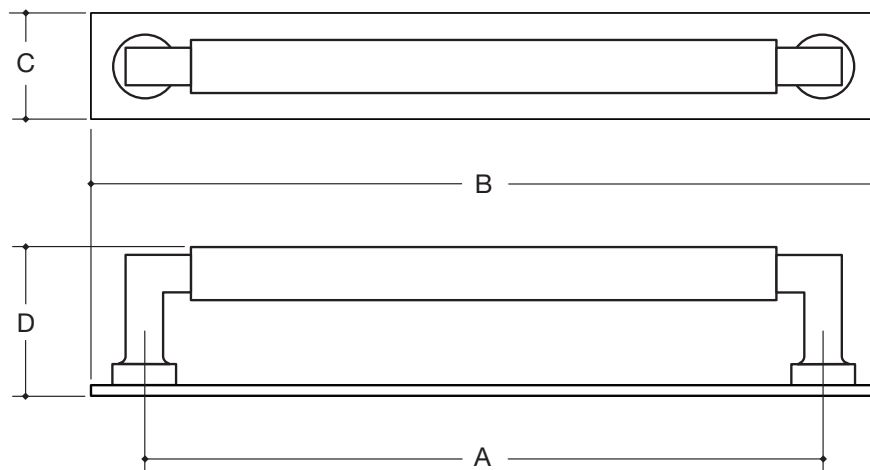


WATER STREET

JAMESTOWN NEW YORK



			A	B	C	D	
	7791	W/ 4450	PULL & BACK PLATE	4-1/2"	5-3/4"	1-1/4"	1-3/4"
	7792	W/ 4451	PULL & BACK PLATE	6"	7-1/4"	1-1/4"	1-3/4"
	7793	W/ 4452	PULL & BACK PLATE	8"	9-1/4"	1-1/4"	1-3/4"
	7794	W/ 4453	PULL & BACK PLATE	10"	11-1/4"	1-1/4"	1-3/4"
	7795	W/ 4454	PULL & BACK PLATE	12"	13-1/4"	1-1/4"	1-3/4"
BB	7813	W/ 4457	APP. PULL & B.P.	8"	9-3/4"	1-1/2"	2-1/2"
BB	7814	W/ 4455	APP. PULL & B.P.	10"	11-3/4"	1-1/2"	2-1/2"
BB	7815	W/ 4456	APP. PULL & B.P.	12"	13-3/4"	1-1/2"	2-1/2"



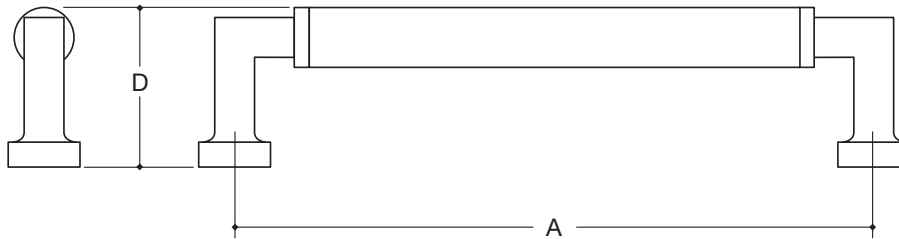
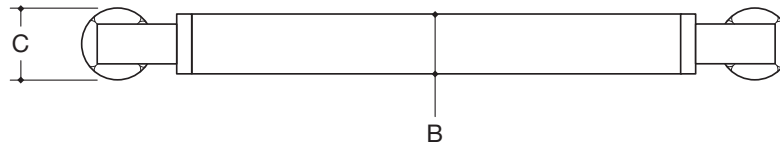
- Hand hammering available on pulls only.
- BB • Available for back to back applications. Back plates required on glass door applications.
- Made to order. Lead times determined by the production levels at the time of order.



WATER STREET.
JAMESTOWN NEW YORK



		A	B	C	D
	7801 PULL	4-1/2"	5/8"	3/4"	1-5/8"
	7802 PULL	6"	5/8"	3/4"	1-5/8"
	7783 PULL	8"	3/4"	7/8"	2"
	7784 PULL	10"	3/4"	7/8"	2"
BB	7825 APPLIANCE PULL	12"	7/8"	1"	2-3/8"
BB	7826 APPLIANCE PULL	18"	7/8"	1"	2-3/8"



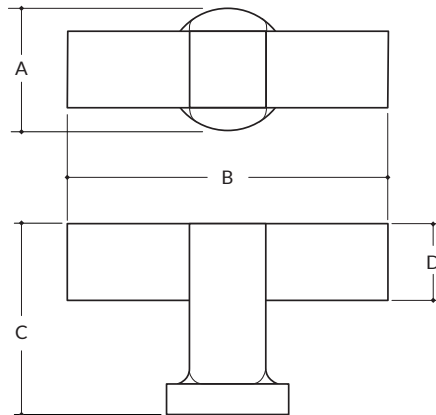
- BB ♦ Available for back to back applications. Back plates required on glass door applications.
- ♦ Specify legs finish x spindle wood species.
- ♦ Made to order. Lead times determined by the production levels at the time of order.



WATER STREET.
JAMESTOWN NEW YORK



	A	B	C	D
7799 T-PULL	1"	2-5/8"	1-9/16"	5/8"



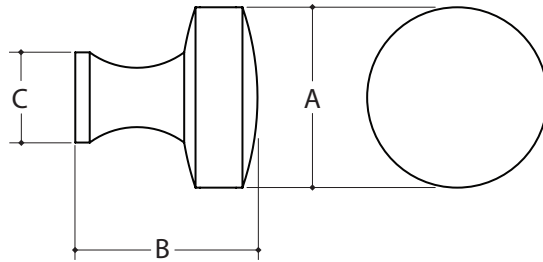
- To order split finishes, specify leg x spindle.
- Made to order. Lead times determined by the production levels at the time of order.



WATER STREET.
JAMESTOWN NEW YORK



		A	B	C	
QS	8581	KNOB	1-1/4"	1-1/4"	5/8"
QS	8582	KNOB	1-1/2"	1-1/2"	3/4"



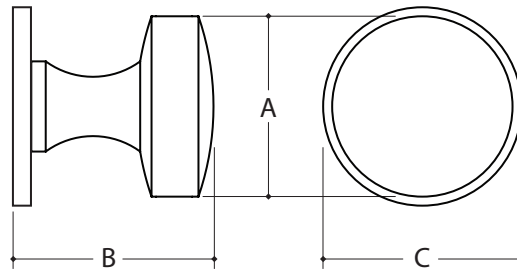
- Hand hammering or custom engraving available.
 - Made to order. Lead times determined by the production levels at the time of order.
- QS • Available for 24 hour Quick Ship. See the Quick Ship price list for available finishes.



WATER STREET.
JAMESTOWN NEW YORK



		A	B	C
8581 W/ 4399	KNOB & BACK PLATE	1-1/4"	1-3/8"	1-3/8"
8582 W/ 4416	KNOB & BACK PLATE	1-1/2"	1-5/8"	1-5/8"



- Hand hammering or custom engraving available on knobs only.
- Made to order. Lead times determined by the production levels at the time of order.

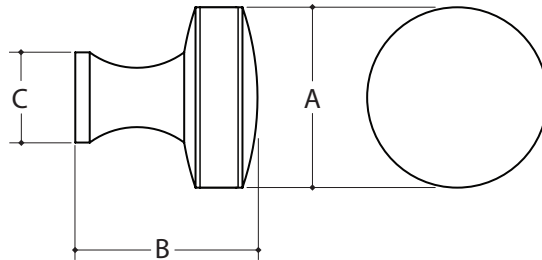


WATER STREET.

JAMESTOWN NEW YORK



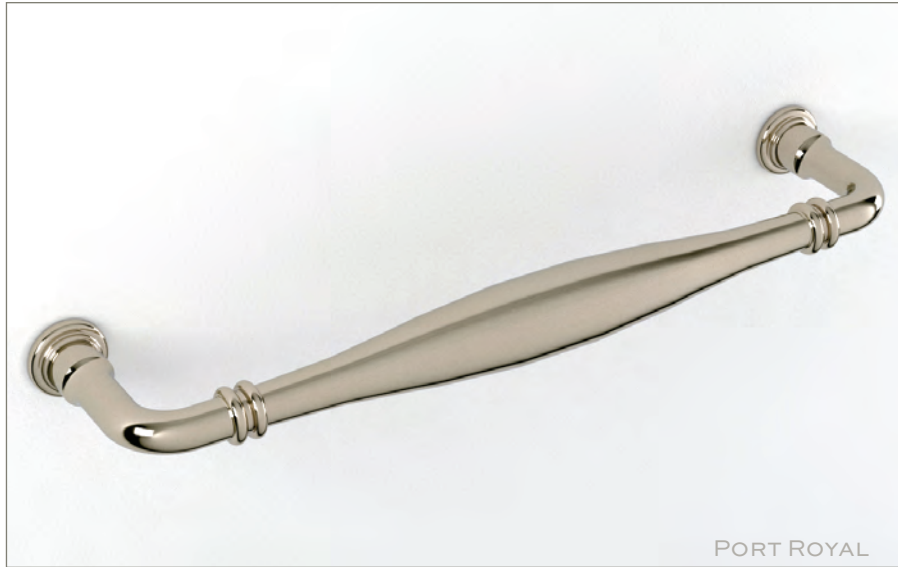
		A	B	C
8591	WOOD KNOB	1-1/4"	1-1/4"	5/8"
8592	WOOD KNOB	1-1/2"	1-1/2"	3/4"



- Hand hammering or custom engraving available.
- Specify knob finish x insert wood species.
- Made to order. Lead times determined by the production levels at the time of order.

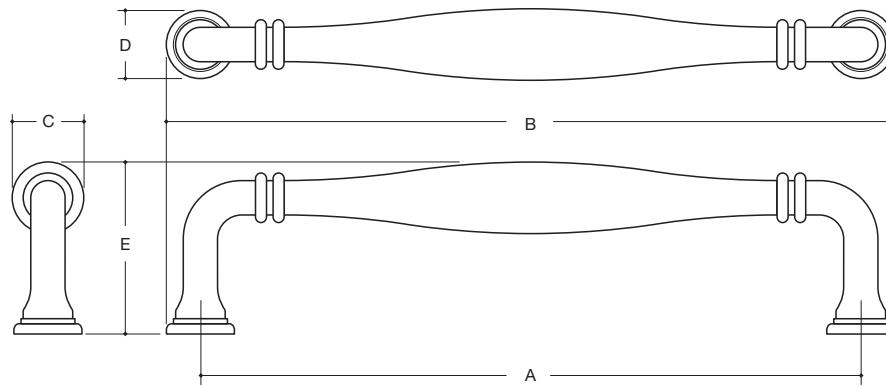


WATER STREET.
JAMESTOWN NEW YORK



PORT ROYAL

		A	B	C	D	E	
QS	7380	PULL	3-1/2"	4"	1/2"	1/2"	1-7/32"
QS	7381	PULL	4"	4-19/32"	9/16"	19/32"	1-3/8"
QS	7382	PULL	6"	6-5/8"	21/32"	5/8"	1-9/16"
QS	7383	PULL	8"	8-5/8"	41/64"	5/8"	1-9/16"
QS	7385	PULL	12"	12-5/8"	41/64"	5/8"	1-9/16"
BB QS	7384	APPLIANCE PULL	8"	8-3/4"	3/4"	3/4"	2"
BB QS	7386	APPLIANCE PULL	12"	12-15/16"	1"	15/16"	2-5/16"
BB QS	7388	APPLIANCE PULL	18"	19"	1-1/32"	1"	2-5/8"



- ◆ Hand hammering available.
- BB ◆ Available for back to back applications. Back plates required on glass door applications.
- ◆ Made to order. Lead times determined by the production levels at the time of order.
- QS ◆ Standard pulls available for 24 hour Quick Ship. See the Quick Ship price list for available finishes.

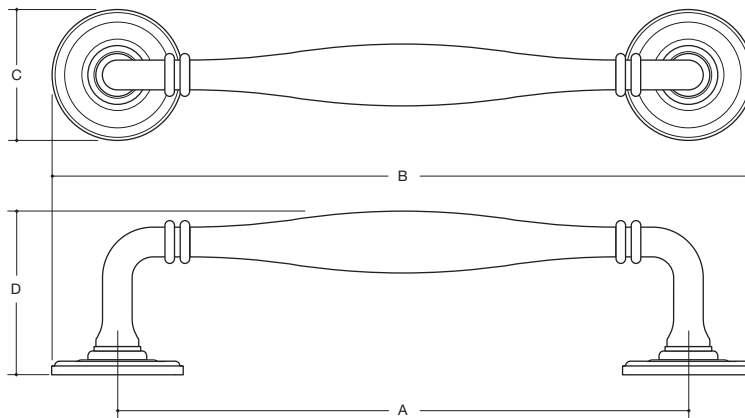


WATER STREET

JAMESTOWN NEW YORK



		A	B	C	D	
	7380 / 4384	PULL & BACK PLATE	3-1/2"	4-1/8"	1-1/8"	1-7/16"
	7381 / 4384	PULL & BACK PLATE	4"	5-1/8"	1-1/8"	1-1/2"
	7382 / 4345	PULL & BACK PLATE	6"	7-3/8"	1-3/8"	1-11/16"
	7383 / 4345	PULL & BACK PLATE	8"	9-3/8"	1-3/8"	1-11/16"
	7385 / 4345	PULL & BACK PLATE	12"	13-3/8"	1-3/8"	1-11/16"
BB	7384 / 4345_B	PULL & BACK PLATE	8"	9-3/8"	1-3/8"	2-11/16"
BB	7386 / 4346_B	PULL & BACK PLATE	12"	13-5/8"	1-5/8"	2-13/16"
BB	7388 / 4346_B	PULL & BACK PLATE	18"	19-5/8"	1-5/8"	2-3/4"



- ◆ Hand hammering available on pulls only.
- BB ◆ Available for back to back applications. Back plates required on glass door applications.
- ◆ Made to order. Lead times determined by the production levels at the time of order.

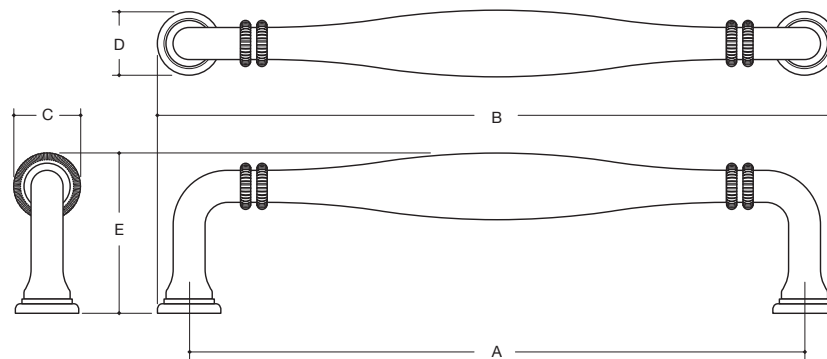


WATER STREET.

JAMESTOWN NEW YORK



		A	B	C	D	E
	7380* PULL	3-1/2"	4"	1/2"	1/2"	1-7/32"
	7381* PULL	4"	4-19/32"	9/16"	19/32"	1-3/8"
	7382* PULL	6"	6-5/8"	21/32"	5/8"	1-9/16"
	7383* PULL	8"	8-5/8"	41/64"	5/8"	1-9/16"
	7385* PULL	12"	12-5/8"	41/64"	5/8"	1-9/16"
BB	7384* APPLIANCE PULL	8"	8-3/4"	3/4"	3/4"	2"
BB	7386* APPLIANCE PULL	12"	12-15/16"	1"	15/16"	2-5/16"
BB	7388* APPLIANCE PULL	18"	19"	1-1/32"	1"	2-5/8"



* Insert code -C, -D or -R after part number for knurling option.

◆ Hand hammering available.

BB ◆ Available for back to back applications. Back plates required on glass door applications.

◆ Made to order. Lead times determined by the production levels at the time of order.

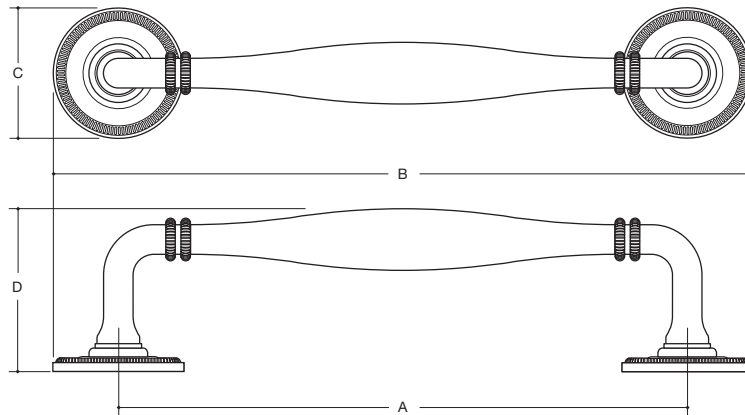


WATER STREET

JAMESTOWN NEW YORK



		A	B	C	D	
	7380* / 4384*	PULL & BACK PLATE	3-1/2"	4-1/8"	1-1/8"	1-7/16"
	7381* / 4384*	PULL & BACK PLATE	4"	5-1/8"	1-1/8"	1-1/2"
	7382* / 4345*	PULL & BACK PLATE	6"	7-3/8"	1-3/8"	2-3/32"
	7383* / 4345*	PULL & BACK PLATE	8"	9-3/8"	1-3/8"	1-11/16"
	7385* / 4345*	PULL & BACK PLATE	12"	13-3/8"	1-3/8"	1-11/16"
BB	7384* / 4345_B*	PULL & BACK PLATE	8"	9-3/8"	1-3/8"	2-11/16"
BB	7386* / 4346_B*	PULL & BACK PLATE	12"	13-5/8"	1-5/8"	2-13/16"
BB	7388* / 4346_B*	PULL & BACK PLATE	18"	19-5/8"	1-5/8"	2-3/4"



* Insert code -C, -D or -R after part number for knurling option.

◆ Hand hammering available on pulls only.

BB ◆ Available for back to back applications. Back plates required on glass door applications.

◆ Made to order. Lead times determined by the production levels at the time of order.

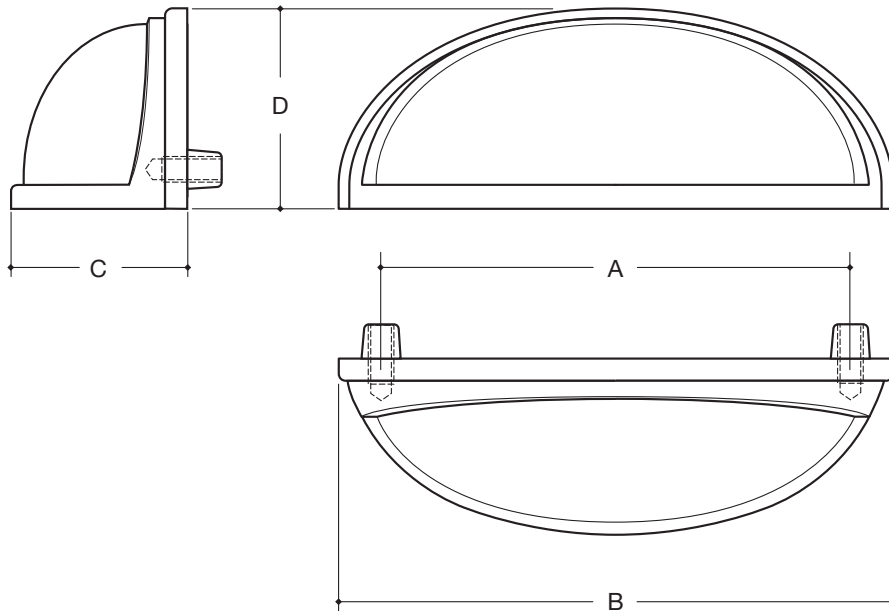


WATER STREET.

JAMESTOWN NEW YORK



		A	B	C	D	
QS	7618	CUP PULL	3"	3-1/2"	1-1/8"	1-9/32"



- Hand hammering available.
 - Made to order. Lead times determined by the production levels at the time of order.
- QS • Available for 24 hour Quick Ship. See the Quick Ship price list for available finishes.

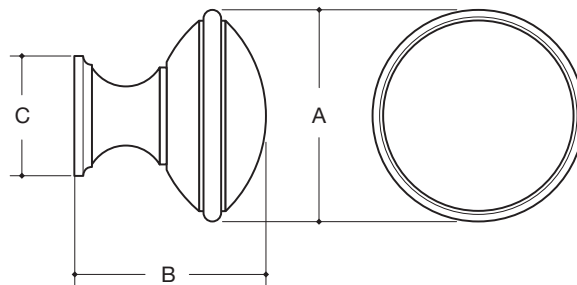


WATER STREET.

JAMESTOWN NEW YORK



		A	B	C
	8555 KNOB	1"	1"	5/8"
QS	8505 KNOB	1-1/4"	1-3/16"	3/4"
QS	8506 KNOB	1-1/2"	1-11/32"	27/32"



- ◆ Hand hammering available.
 - ◆ Made to order. Lead times determined by the production levels at the time of order.
- QS ◆ Available for 24 hour Quick Ship. See the Quick Ship price list for available finishes.

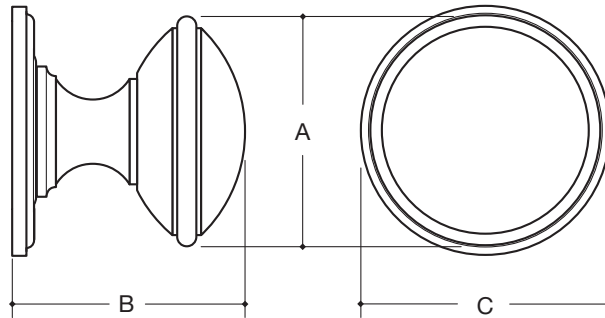


WATER STREET.
JAMESTOWN NEW YORK



PORT ROYAL

		A	B	C
8555 W/ 4384	KNOB & BACK PLATE	1"	1-5/32"	1-1/8"
8505 W/ 4345	KNOB & BACK PLATE	1-1/4"	1-11/32"	1-3/8"
8506 W/ 4346	KNOB & BACK PLATE	1-1/2"	1-1/2"	1-5/8"



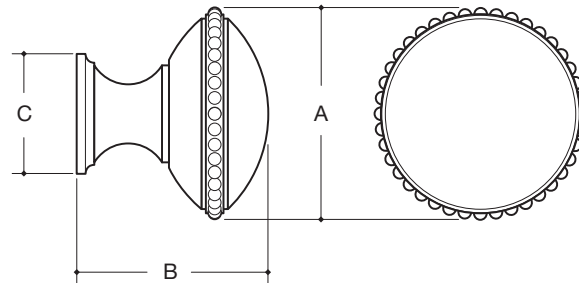
- Hand hammering available on knobs only.
- Made to order. Lead times determined by the production levels at the time of order.



WATER STREET.
JAMESTOWN NEW YORK



	A	B	C
8505-B BEAD KNOB	1-1/4"	1-3/16"	3/4"
8506-B BEAD KNOB	1-1/2"	1-11/32"	27/32"



- Hand hammering available.
- Made to order. Lead times determined by the production levels at the time of order.

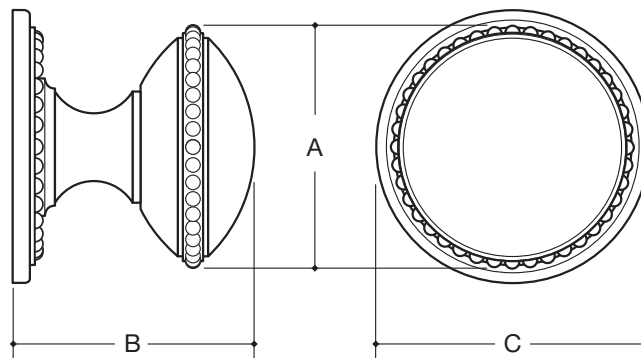


WATER STREET.
JAMESTOWN NEW YORK



PORT ROYAL

	A	B	C
8505-B W/ 4343 KNOB & BACK PLATE	1-1/4"	1-21/64"	1-7/16"
8506-B W/ 4344 KNOB & BACK PLATE	1-1/2"	1-31/64"	1-11/16"



- Hand hammering available on knobs only.
- Made to order. Lead times determined by the production levels at the time of order.

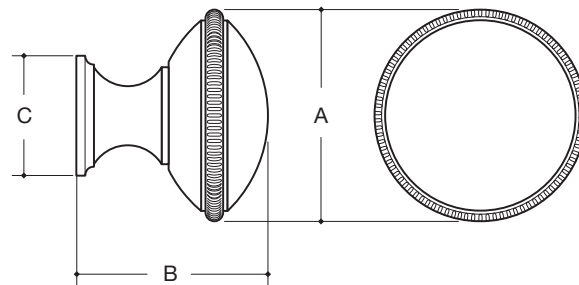


WATER STREET.

JAMESTOWN NEW YORK



	A	B	C
8555-C COIN KNOB	1"	1"	5/8"
QS 8505-C COIN KNOB	1-1/4"	1-3/16"	3/4"
8506-C COIN KNOB	1-1/2"	1-11/32"	27/32"



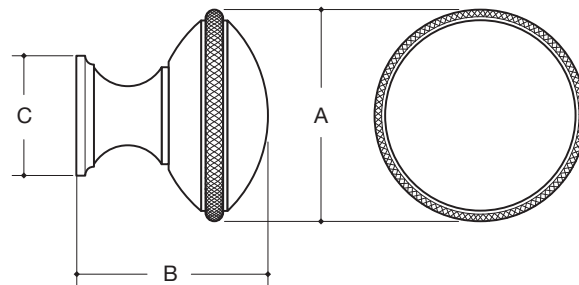
- Hand hammering available.
- Made to order. Lead times determined by the production levels at the time of order.
- QS • Available for 24 hour Quick Ship. See the Quick Ship price list for available finishes.



WATER STREET.
JAMESTOWN NEW YORK



	A	B	C
8555-D DIAMOND KNOB	1"	1"	5/8"
8505-D DIAMOND KNOB	1-1/4"	1-3/16"	3/4"
8506-D DIAMOND KNOB	1-1/2"	1-11/32"	27/32"



- Hand hammering available.
- Made to order. Lead times determined by the production levels at the time of order.

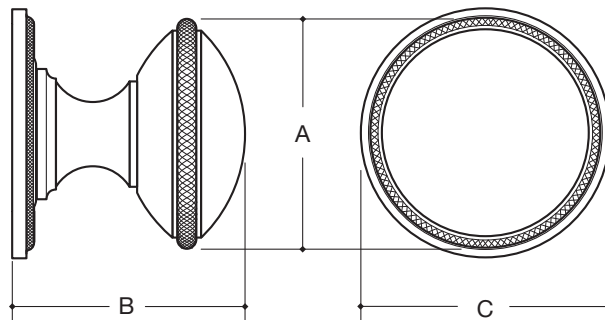


WATER STREET.
JAMESTOWN NEW YORK



PORT ROYAL

			A	B	C
8555*	W/4384*	KNOB & BACK PLATE	1"	1-5/32"	1-1/8"
8505*	W/4345*	KNOB & BACK PLATE	1-1/4"	1-11/32"	1-3/8"
8506*	W/4346*	KNOB & BACK PLATE	1-1/2"	1-1/2"	1-5/8"



* Insert code -C, -D or -R after part number for knurling option.

• Hand hammering available on knobs only.

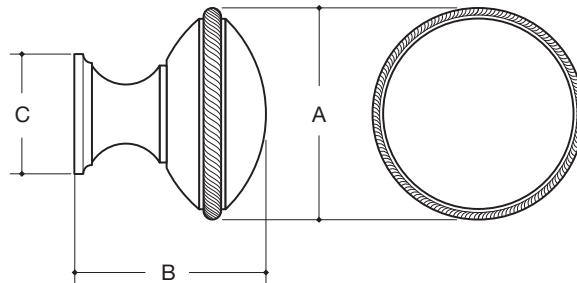
• Made to order. Lead times determined by the production levels at the time of order.



WATER STREET.
JAMESTOWN NEW YORK



	A	B	C
8555-R ROPE KNOB	1"	1"	5/8"
8505-R ROPE KNOB	1-1/4"	1-3/16"	3/4"
8506-R ROPE KNOB	1-1/2"	1-11/32"	27/32"



- Hand hammering available.
- Made to order. Lead times determined by the production levels at the time of order.

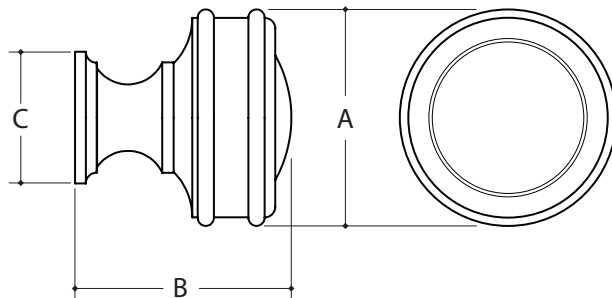


WATER STREET.

JAMESTOWN NEW YORK



		A	B	C	
QS	8531	KNOB	1-1/4"	1-1/4"	3/4"
QS	8532	KNOB	1-1/2"	1-1/2"	29/32"



- Hand hammering available.
 - Made to order. Lead times determined by the production levels at the time of order.
- QS • Available for 24 hour Quick Ship. See the Quick Ship price list for available finishes.

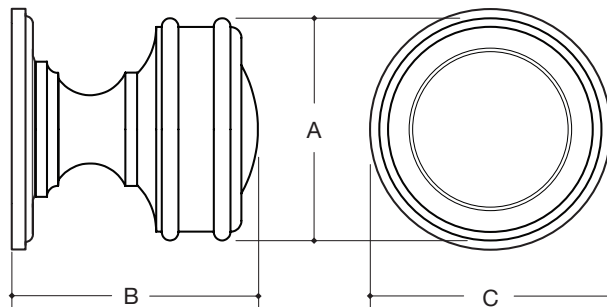


WATER STREET.
JAMESTOWN NEW YORK



PORT ROYAL

		A	B	C
8531 W/ 4345	KNOB & BACK PLATE	1-1/4"	1-1/4"	1-3/8"
8532 W/ 4346	KNOB & BACK PLATE	1-1/2"	1-1/2"	1-5/8"



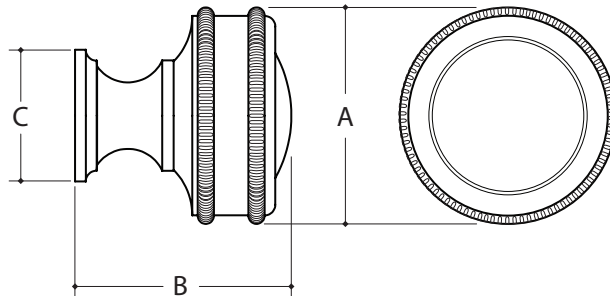
- Hand hammering available on knobs only.
- Made to order. Lead times determined by the production levels at the time of order.



WATER STREET.
JAMESTOWN NEW YORK



	A	B	C
8531-C COIN KNOB	1-1/4"	1-1/4"	3/4"
8532-C COIN KNOB	1-1/2"	1-1/2"	29/32"



- Hand hammering available.
- Made to order. Lead times determined by the production levels at the time of order.

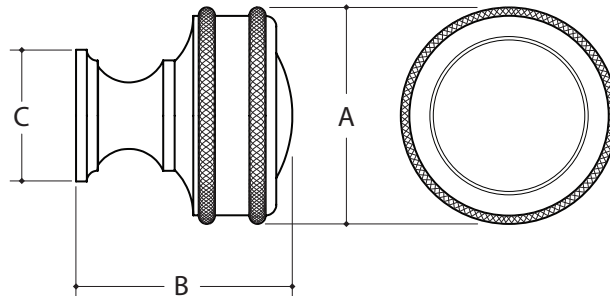


WATER STREET.
JAMESTOWN NEW YORK



PORT ROYAL

		A	B	C
8531-D	DIAMOND KNOB	1-1/4"	1-1/4"	3/4"
8532-D	DIAMOND KNOB	1-1/2"	1-1/2"	29/32"



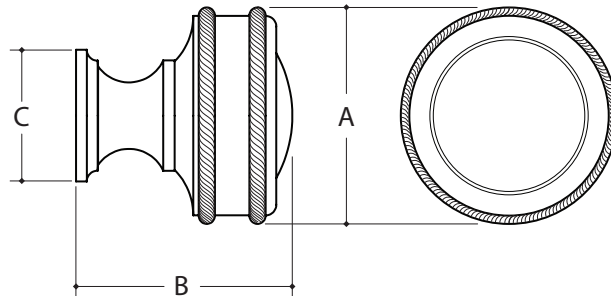
- Hand hammering available.
- Made to order. Lead times determined by the production levels at the time of order.



WATER STREET.
JAMESTOWN NEW YORK



	A	B	C
8531-R ROPE KNOB	1-1/4"	1-1/4"	3/4"
8532-R ROPE KNOB	1-1/2"	1-1/2"	29/32"



- Hand hammering available.
- Made to order. Lead times determined by the production levels at the time of order.

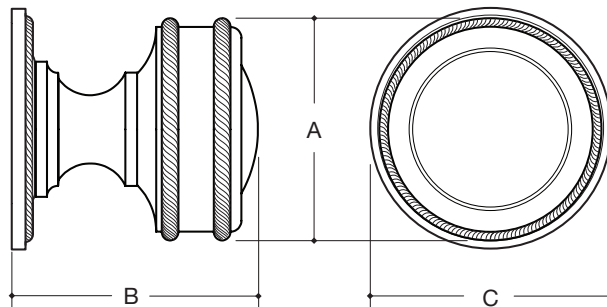


WATER STREET.
JAMESTOWN NEW YORK



PORT ROYAL

			A	B	C
8531*	W/ 4345*	KNOB & BACK PLATE	1-1/4"	1-1/4"	1-3/8"
8532*	W/ 4346*	KNOB & BACK PLATE	1-1/2"	1-1/2"	1-5/8"



- * Insert Code -C, -D or -R after part number for knurling option.
- Hand hammering available on knobs only.
- Made to order. Lead times determined by the production levels at the time of order.



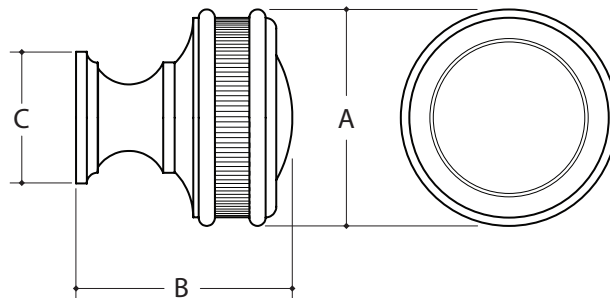
WATER STREET.

JAMESTOWN NEW YORK



PORT ROYAL

		A	B	C
QS 8533	RECESSED COIN KNOB	1-1/4"	1-1/4"	3/4"
QS 8534	RECESSED COIN KNOB	1-1/2"	1-1/2"	29/32"



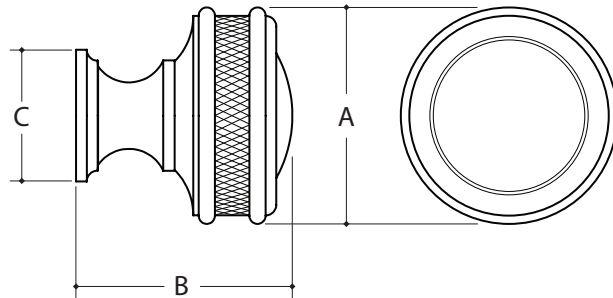
- ◆ Hand hammering available.
 - ◆ Made to order. Lead times determined by the production levels at the time of order.
- QS ◆ Available for 24 hour Quick Ship. See the Quick Ship price list for available finishes.



WATER STREET.
JAMESTOWN NEW YORK



	A	B	C
8533-D RECESSED DIAMOND KNOB	1-1/4"	1-1/4"	3/4"
8534-D RECESSED DIAMOND KNOB	1-1/2"	1-1/2"	29/32"



- Hand hammering available.
- Made to order. Lead times determined by the production levels at the time of order.

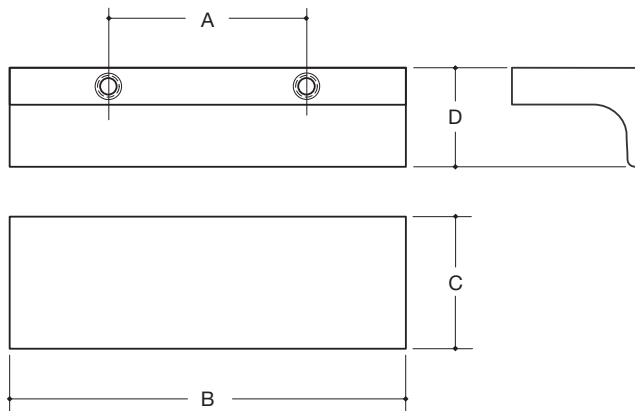


WATER STREET

JAMESTOWN NEW YORK



		A	B	C	D
7710-034	TAB PULL	3/4"	1-1/2"	1"	3/4"
7710-112	TAB PULL	1-1/2"	3"	1"	3/4"
7710-412	TAB PULL	4-1/2"	6"	1"	3/4"
7710-6	TAB PULL	6"	8"	1"	3/4"
7710-10	TAB PULL	10"	12"	1"	3/4"
7710-12	TAB PULL	12"	14"	1"	3/4"
7710-18	TAB PULL	18"	20"	1"	3/4"



- Hand hammering available, front face only.
- Custom lengths available subject to material availability. Extended lead times apply.
- Made to order. Lead times determined by the production levels at the time of order.

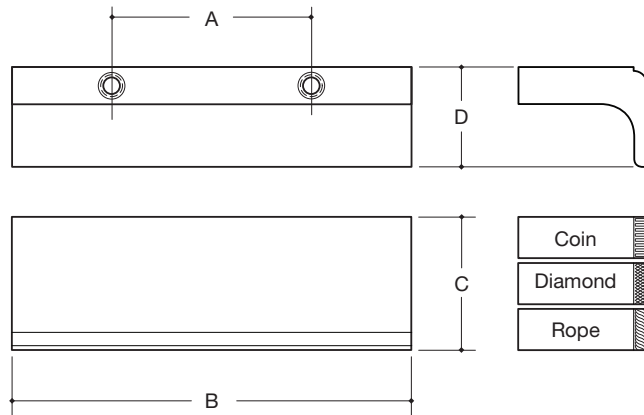


WATER STREET.

JAMESTOWN NEW YORK



		A	B	C	D
7712*-034	TAB PULL	3/4"	1-1/2"	1"	3/4"
7712*-112	TAB PULL	1-1/2"	3"	1"	3/4"
7712*-412	TAB PULL	4-1/2"	6"	1"	3/4"
7712*-6	TAB PULL	6"	8"	1"	3/4"
7712*-10	TAB PULL	10"	12"	1"	3/4"
7712*-12	TAB PULL	12"	14"	1"	3/4"
7712*-18	TAB PULL	18"	20"	1"	3/4"



- * Insert code -C, -D or -R after part number for knurling option.
- Custom lengths available subject to material availability. Extended lead times apply.
- Made to order. Lead times determined by the production levels at the time of order.

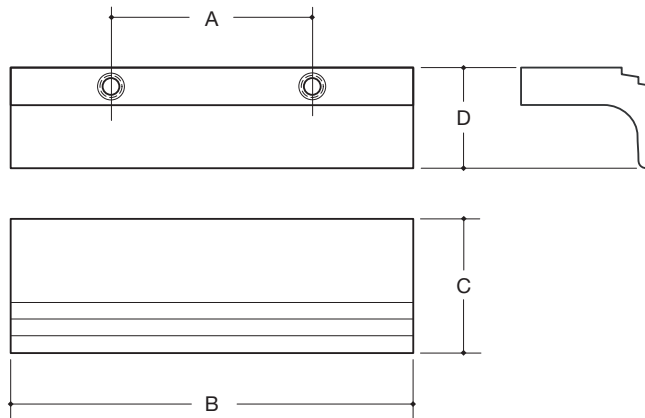


WATER STREET.

JAMESTOWN NEW YORK



		A	B	C	D
7714-034	TAB PULL	3/4"	1-1/2"	1"	3/4"
7714-112	TAB PULL	1-1/2"	3"	1"	3/4"
7714-412	TAB PULL	4-1/2"	6"	1"	3/4"
7714-6	TAB PULL	6"	8"	1"	3/4"
7714-10	TAB PULL	10"	12"	1"	3/4"
7714-12	TAB PULL	12"	14"	1"	3/4"
7714-18	TAB PULL	18"	20"	1"	3/4"



- Custom lengths available subject to material availability. Extended lead times apply.
- Made to order. Lead times determined by the production levels at the time of order.

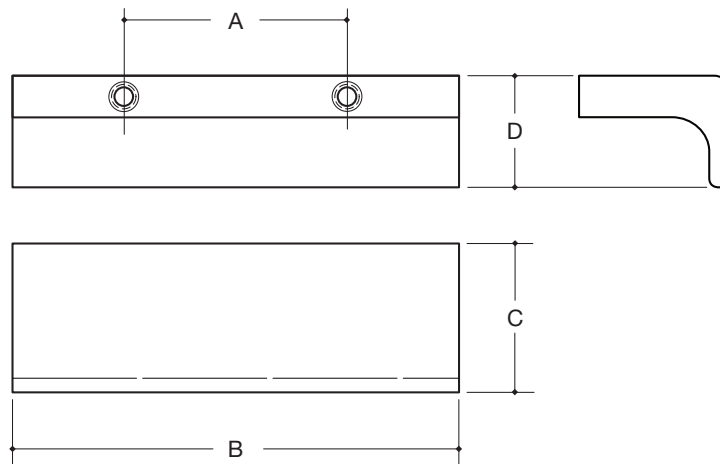


WATER STREET

JAMESTOWN NEW YORK



		A	B	C	D
7716-034	TAB PULL	3/4"	1-1/2"	1"	3/4"
7716-112	TAB PULL	1-1/2"	3"	1"	3/4"
7716-412	TAB PULL	4-1/2"	6"	1"	3/4"
7716-6	TAB PULL	6"	8"	1"	3/4"
7716-10	TAB PULL	10"	12"	1"	3/4"
7716-12	TAB PULL	12"	14"	1"	3/4"
7716-18	TAB PULL	18"	20"	1"	3/4"



- Custom lengths available subject to material availability. Extended lead times apply.
- Made to order. Lead times determined by the production levels at the time of order.



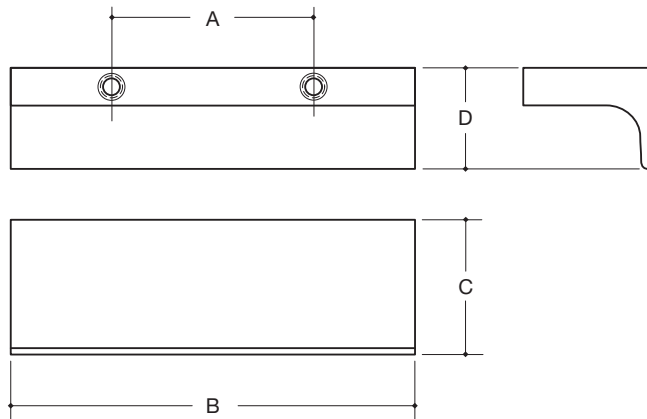
WATER STREET.

JAMESTOWN NEW YORK



SINGLE STEP

		A	B	C	D
7718-034	TAB PULL	3/4"	1-1/2"	1"	3/4"
7718-112	TAB PULL	1-1/2"	3"	1"	3/4"
7718-412	TAB PULL	4-1/2"	6"	1"	3/4"
7718-6	TAB PULL	6"	8"	1"	3/4"
7718-10	TAB PULL	10"	12"	1"	3/4"
7718-12	TAB PULL	12"	14"	1"	3/4"
7718-18	TAB PULL	18"	20"	1"	3/4"

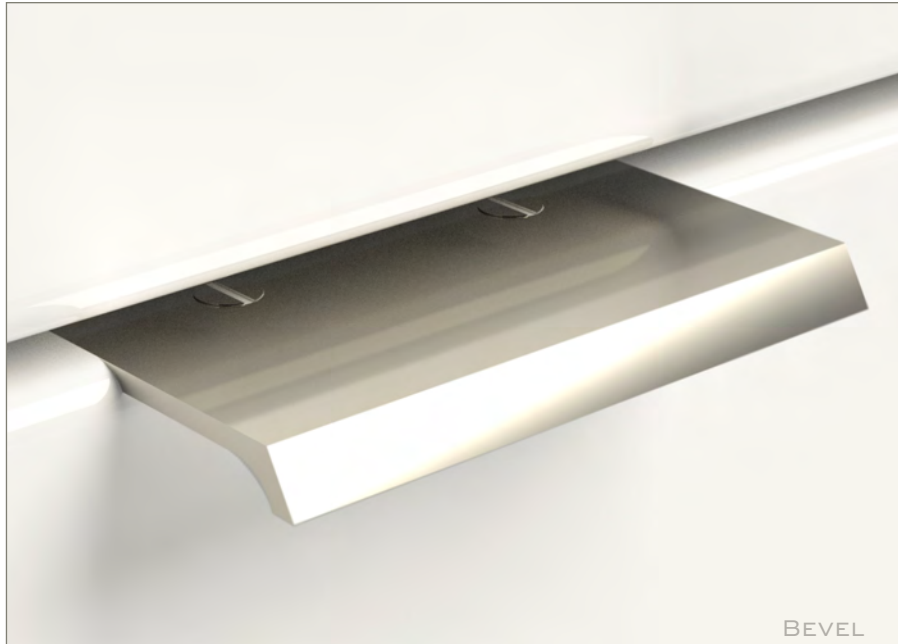


- Hand hammering available, front face only.
- Custom lengths available subject to material availability. Extended lead times apply.
- Made to order. Lead times determined by the production levels at the time of order.



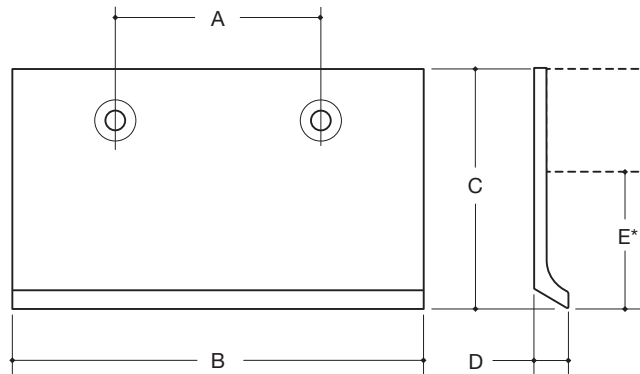
WATER STREET

JAMESTOWN NEW YORK



		A	B	C	D	E*
7720-034	TAB PULL	3/4"	1-1/2"	1-3/4"	1/4"	1"
7720-112	TAB PULL	1-1/2"	3"	1-3/4"	1/4"	1"
7720-412	TAB PULL	4-1/2"	6"	1-3/4"	1/4"	1"
7720-10	TAB PULL	10"	12"	1-3/4"	1/4"	1"
7720-18	TAB PULL	18"	20"	1-3/4"	1/4"	1"

*BASED ON 3/4" DRAWER THICKNESS



- Custom lengths available subject to material availability. Extended lead times apply.
- Made to order. Lead times determined by the production levels at the time of order.



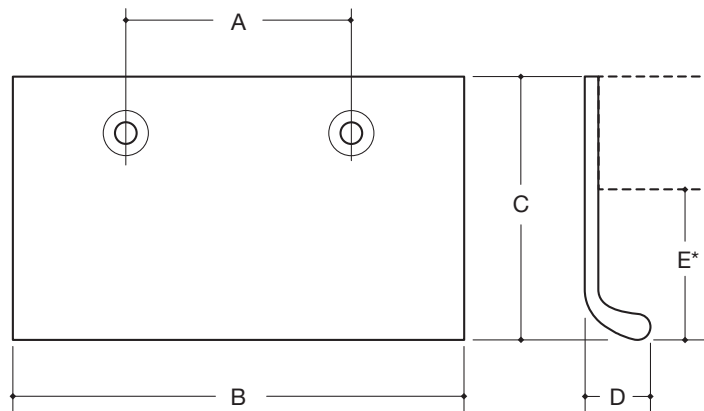
WATER STREET

JAMESTOWN NEW YORK



		A	B	C	D	E*
7721-034	TAB PULL	3/4"	1-1/2"	1-3/4"	7/16"	1"
7721-112	TAB PULL	1-1/2"	3"	1-3/4"	7/16"	1"
7721-412	TAB PULL	4-1/2"	6"	1-3/4"	7/16"	1"
7721-10	TAB PULL	10"	12"	1-3/4"	7/16"	1"
7721-18	TAB PULL	18"	20"	1-3/4"	7/16"	1"

*BASED ON 3/4" DRAWER THICKNESS



- Custom lengths available subject to material availability. Extended lead times apply.
- Made to order. Lead times determined by the production levels at the time of order.

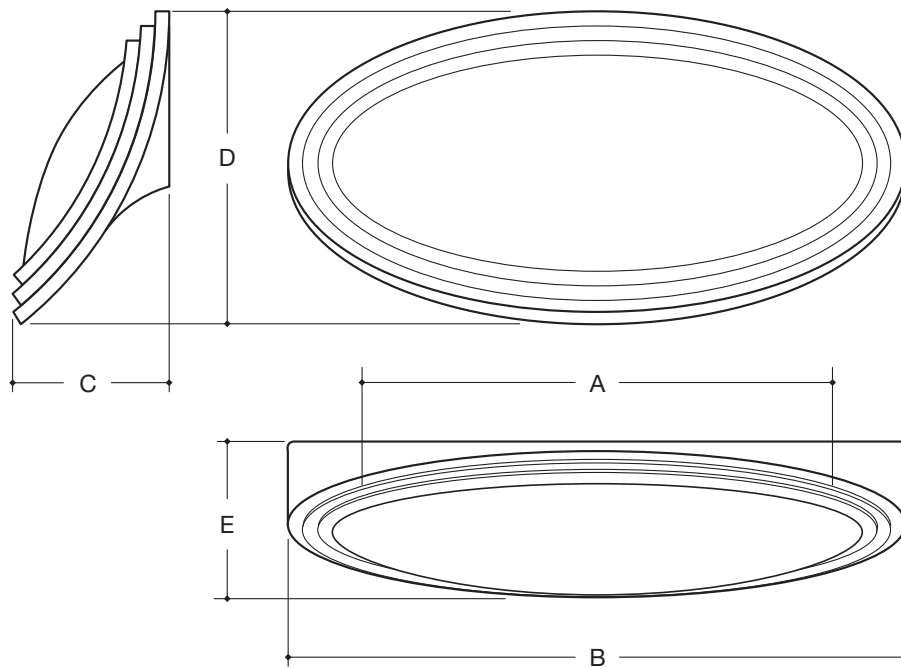


WATER STREET.

JAMESTOWN NEW YORK



		A	B	C	D	E
7265	CUP PULL	3"	3-15/16"	1"	2"	1"

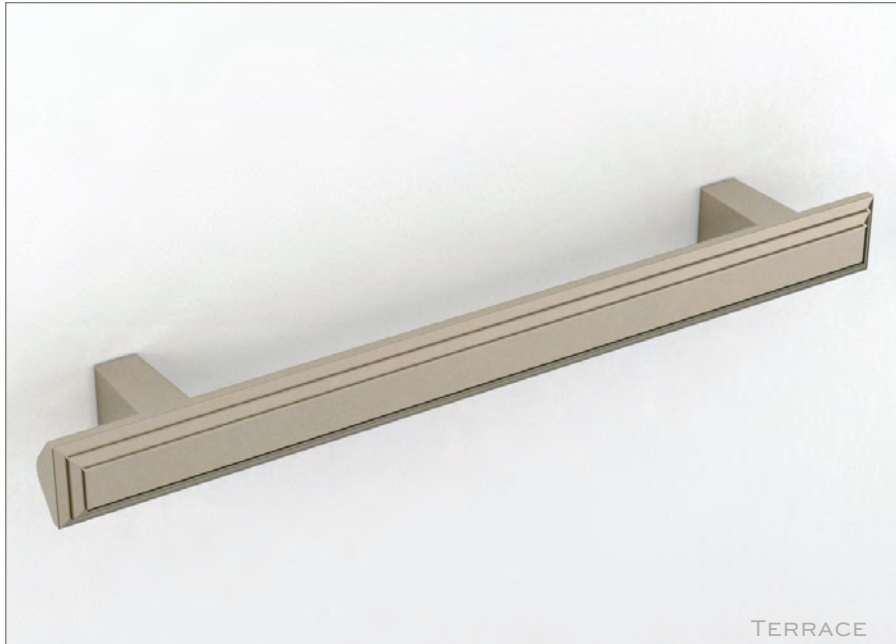


- Hand hammering available.
- Made to order. Lead times determined by the production levels at the time of order.

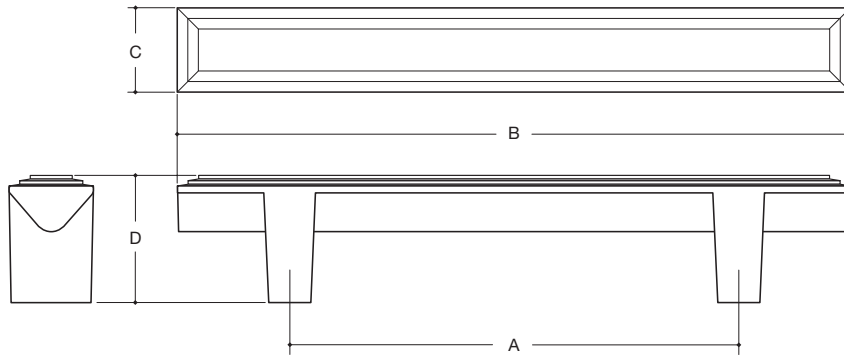


WATER STREET.

JAMESTOWN NEW YORK



			A	B	C	D
QS	7312	PULL	3"	4-1/2"	3/4"	1-1/8"
QS	7264	PULL	4"	6"	3/4"	1-1/8"
QS	7441	PULL	6"	8"	3/4"	1-1/8"
BB QS	7461	APPLIANCE PULL	8"	11"	1"	2"
BB QS	7291	APPLIANCE PULL	12"	15"	1"	2-1/8"



- ◆ Hand hammering available.
- BB ◆ Available for back to back applications. Note: set screws will be visible on the sides of pull legs.
- ◆ Made to order. Lead times determined by the production levels at the time of order.
- QS ◆ Standard pulls available for 24 hour Quick Ship. See the Quick Ship price list for available finishes.

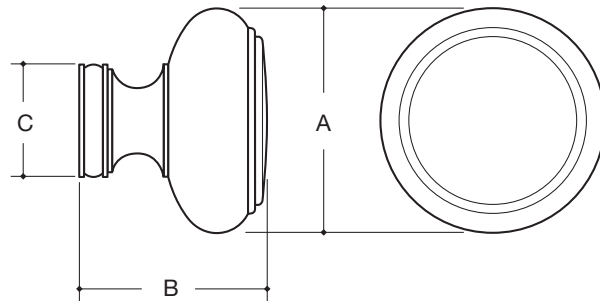


WATER STREET.

JAMESTOWN NEW YORK



		A	B	C
QS	8432 KNOB	1-1/4"	1-1/8"	5/8"
	8411 KNOB	1-1/2"	1-1/4"	3/4"



- Hand hammering or custom engraving available.
 - Made to order. Lead times determined by the production levels at the time of order.
- QS • Available for 24 hour Quick Ship. See the Quick Ship price list for available finishes.

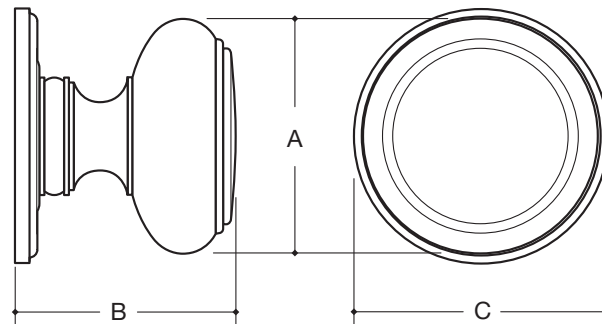


WATER STREET.
JAMESTOWN NEW YORK



TERRACE

		A	B	C
8432 W/ 4345	KNOB & BACK PLATE	1-1/4"	1-9/32"	1-3/8"
8411 W/ 4346	KNOB & BACK PLATE	1-1/2"	1-11/32"	1-5/8"



- Hand hammering or custom engraving available on knob only.
- Made to order. Lead times determined by the production levels at the time of order.



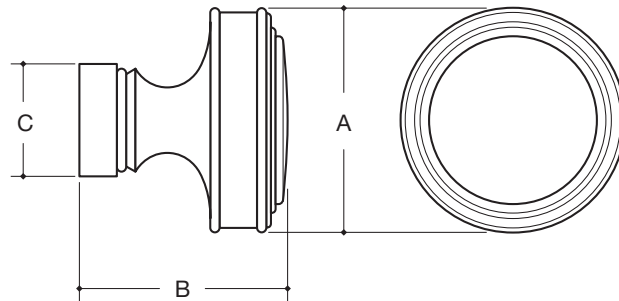
WATER STREET.

JAMESTOWN NEW YORK



TERRACE

		A	B	C	
QS	8433	KNOB	1-1/4"	1-3/16"	5/8"
	8393	KNOB	1-1/2"	1-3/8"	3/4"



- ◆ Hand hammering or custom engraving available.
- ◆ Made to order. Lead times determined by the production levels at the time of order.
- QS ◆ Available for 24 hour Quick Ship. See the Quick Ship price list for available finishes.

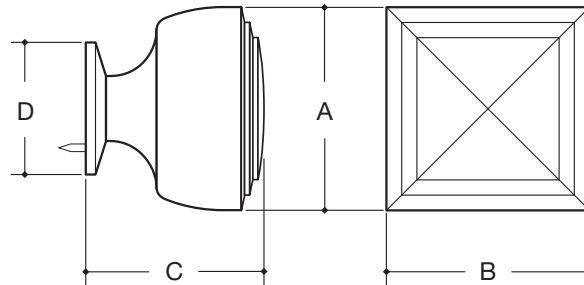


WATER STREET.

JAMESTOWN NEW YORK



		A & B	C	D	
QS	8434	KNOB	1-1/4"	1-3/32"	13/16"
	8370	KNOB	1-1/2"	1-9/32"	1"



- ◆ Hand hammering available.
 - ◆ Made to order. Lead times determined by the production levels at the time of order.
- QS ◆ Available for 24 hour Quick Ship. See the Quick Ship price list for available finishes.

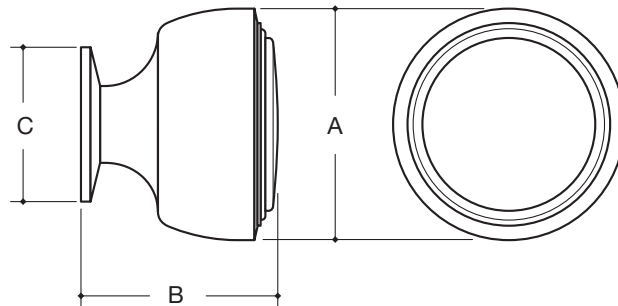


WATER STREET.

JAMESTOWN NEW YORK



		A	B	C	
QS	8435	KNOB	1-1/4"	1-1/8"	13/16"
QS	8369	KNOB	1-1/2"	1-9/32"	1"



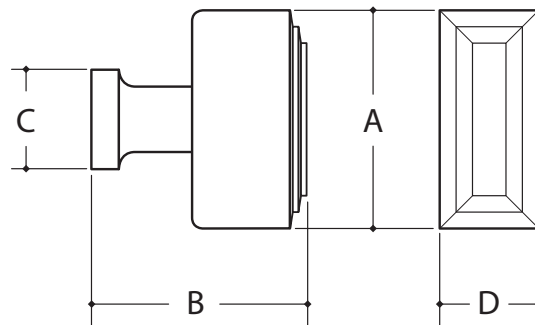
- ◆ Hand hammering or custom engraving available.
 - ◆ Made to order. Lead times determined by the production levels at the time of order.
- QS ◆ Available for 24 hour Quick Ship. See the Quick Ship price list for available finishes.



WATER STREET.
JAMESTOWN NEW YORK



		A	B	C	D
8528	KNOB	1-1/4"	1-1/4"	9/16"	9/16"



♦ Made to order. Lead times determined by the production levels at the time of order.

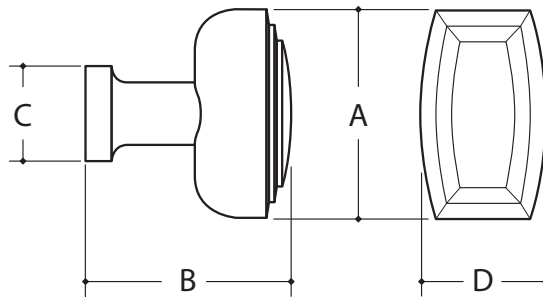


WATER STREET.
JAMESTOWN NEW YORK



TERRACE

		A	B	C	D
QS	8530 OVAL KNOB	1-1/4"	1-1/4"	9/16"	3/4"



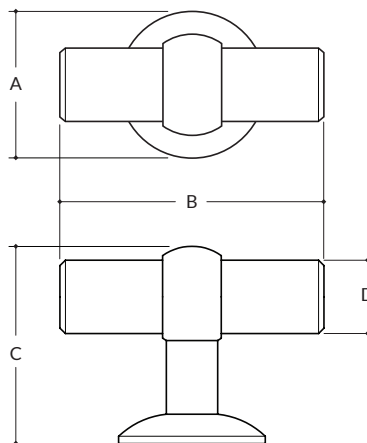
- Made to order. Lead times determined by the production levels at the time of order.
- QS • Available for 24 hour Quick Ship. See the Quick Ship price list for available finishes.



WATER STREET.
JAMESTOWN NEW YORK



	A	B	C	D
7670 T-PULL	1-1/4"	2-1/4"	1-11/16"	5/8"



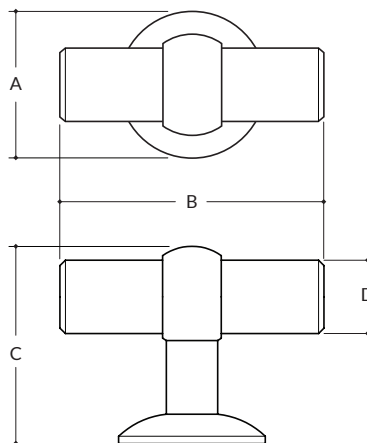
- To order split finishes, specify leg x spindle.
- Made to order. Lead times determined by the production levels at the time of order.



WATER STREET.
JAMESTOWN NEW YORK



	A	B	C	D
7750 T-PULL - WOODEN	1-1/4"	2-1/4"	1-11/16"	5/8"



- To order finishes, specify leg x spindle wood species.
- Made to order. Lead times determined by the production levels at the time of order.



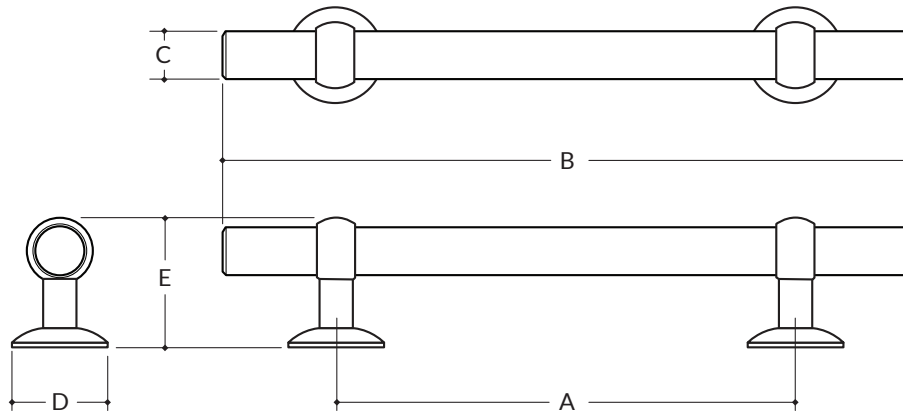
WATER STREET.

JAMESTOWN NEW YORK



URBAN LOFT

		A	B	C	D	E
7671	PULL	3"	4-1/2"	5/8"	1-1/4"	1-11/16"
7672	PULL	4-1/2"	6"	5/8"	1-1/4"	1-11/16"
7673	PULL	6"	8"	5/8"	1-1/4"	1-11/16"
7674	PULL	8"	10"	5/8"	1-1/4"	1-11/16"
7675	PULL	10"	12"	5/8"	1-1/4"	1-11/16"
7676	PULL	12"	14"	5/8"	1-1/4"	1-11/16"
7678	PULL	18"	20"	5/8"	1-1/4"	1-11/16"



- Custom lengths available upon request; specify at time of order.
- To order split finishes, specify leg x spindle.
- Made to order. Lead times determined by the production levels at the time of order.



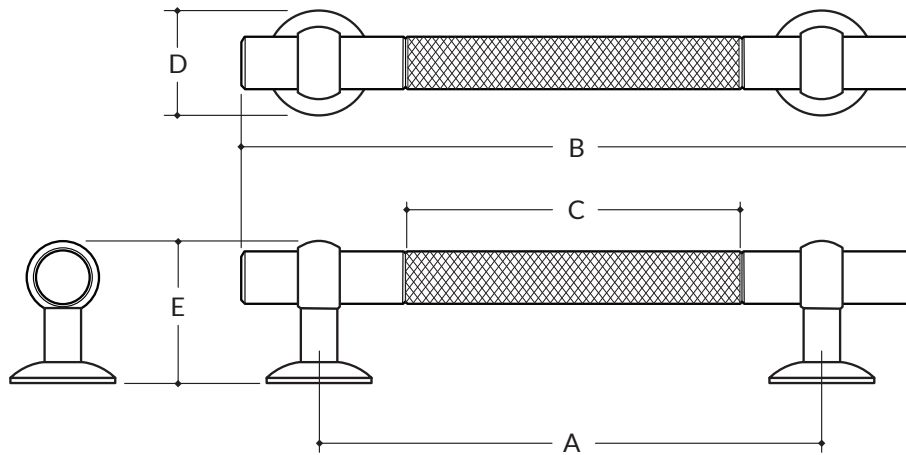
WATER STREET.

JAMESTOWN NEW YORK



URBAN LOFT

		A	B	C	D	E
7671*	PULL	3"	4-1/2"	2"	1-1/4"	1-11/16"
7672*	PULL	4-1/2"	6"	3"	1-1/4"	1-11/16"
7673*	PULL	6"	8"	4"	1-1/4"	1-11/16"
7674*	PULL	8"	10"	4-1/2"	1-1/4"	1-11/16"
7675*	PULL	10"	12"	5"	1-1/4"	1-11/16"
7676*	PULL	12"	14"	6"	1-1/4"	1-11/16"
7678*	PULL	18"	20"	8"	1-1/4"	1-11/16"



- To order split finishes, specify leg x spindle.
- * Insert -D or -H after part number. Diamond knurl or hand hammering available in specified area (C) only.
- Made to order. Lead times determined by the production levels at the time of order.



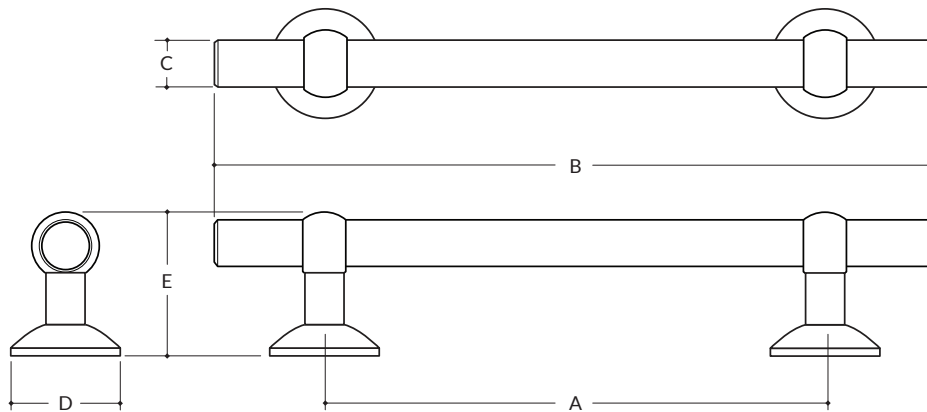
WATER STREET.

JAMESTOWN NEW YORK



URBAN LOFT

			A	B	C	D	E
BB	7684	APPLIANCE PULL	8"	11-1/2"	3/4"	1-3/4"	2-9/32"
BB	7685	APPLIANCE PULL	10"	13-1/2"	3/4"	1-3/4"	2-9/32"
BB	7686	APPLIANCE PULL	12"	15-1/2"	3/4"	1-3/4"	2-9/32"
BB	7688	APPLIANCE PULL	18"	21-1/2"	3/4"	1-3/4"	2-9/32"
BB	7689	APPLIANCE PULL	24"	27-1/2"	3/4"	1-3/4"	2-9/32"



- ◆ Custom lengths available upon request; specify at time of order.
- ◆ Available for back to back applications.
- ◆ To order split finishes, specify leg x spindle.
- ◆ Made to order. Lead times determined by the production levels at the time of order.



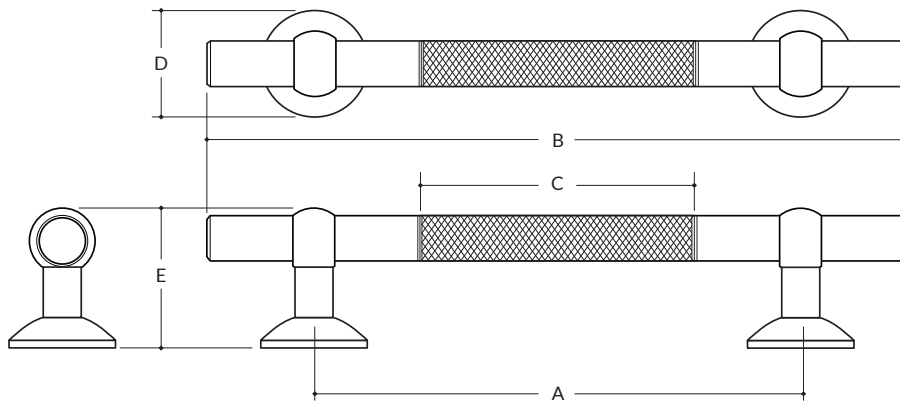
WATER STREET.

JAMESTOWN NEW YORK



URBAN LOFT

			A	B	C	D	E
BB	7684*	APPLIANCE PULL	8"	11-1/2"	4-1/2"	1-3/4"	2-9/32"
BB	7685*	APPLIANCE PULL	10"	13-1/2"	5"	1-3/4"	2-9/32"
BB	7686*	APPLIANCE PULL	12"	15-1/2"	6"	1-3/4"	2-9/32"
BB	7688*	APPLIANCE PULL	18"	21-1/2"	8"	1-3/4"	2-9/32"
BB	7689*	APPLIANCE PULL	24"	27-1/2"	10"	1-3/4"	2-9/32"



- ◆ To order split finishes, specify leg x spindle.
- * Insert -D or -H after part number. Diamond knurl or hand hammering available in specified area (C) only.
- BB ◆ Available for back to back applications.
- ◆ Made to order. Lead times determined by the production levels at the time of order.



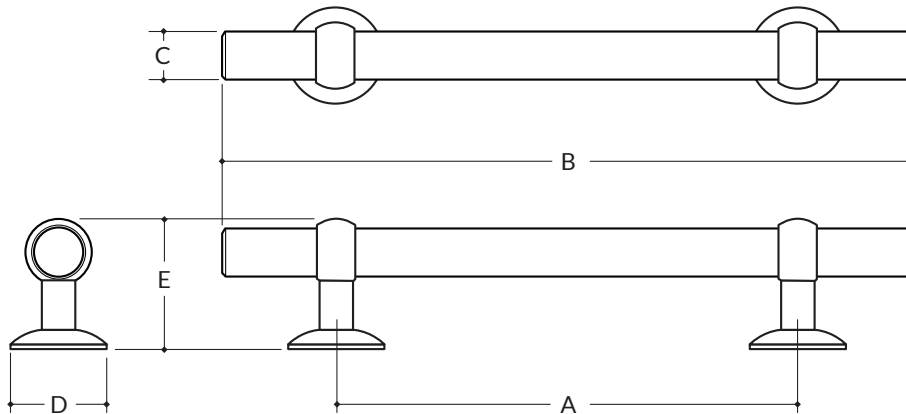
WATER STREET.

JAMESTOWN NEW YORK



URBAN LOFT

		A	B	C	D	E
7751	PULL	3"	4-1/2"	5/8"	1-1/4"	1-11/16"
7752	PULL	4-1/2"	6"	5/8"	1-1/4"	1-11/16"
7753	PULL	6"	8"	5/8"	1-1/4"	1-11/16"
7754	PULL	8"	10"	5/8"	1-1/4"	1-11/16"
7755	PULL	10"	12"	5/8"	1-1/4"	1-11/16"
7756	PULL	12"	14"	5/8"	1-1/4"	1-11/16"
7758	PULL	18"	20"	5/8"	1-1/4"	1-11/16"



- Custom lengths available upon request; specify at time of order.
- Specify legs finish x spindle wood species.
- Made to order. Lead times determined by the production levels at the time of order.



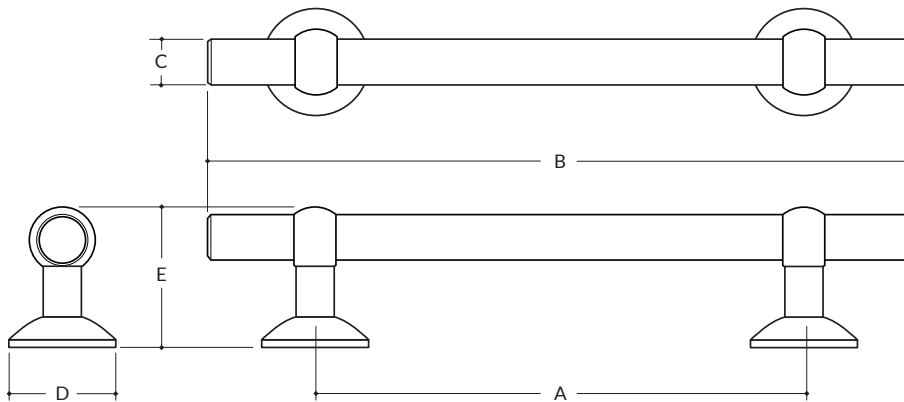
WATER STREET.

JAMESTOWN NEW YORK



URBAN LOFT

			A	B	C	D	E
BB	7764	APPLIANCE PULL	8"	11-1/2"	3/4"	1-3/4"	2-9/32"
BB	7765	APPLIANCE PULL	10"	13-1/2"	3/4"	1-3/4"	2-9/32"
BB	7766	APPLIANCE PULL	12"	15-1/2"	3/4"	1-3/4"	2-9/32"
BB	7768	APPLIANCE PULL	18"	21-1/2"	3/4"	1-3/4"	2-9/32"
BB	7769	APPLIANCE PULL	24"	27-1/2"	3/4"	1-3/4"	2-9/32"



- ◆ Custom lengths available upon request; specify at time of order.
- ◆ Available for back to back applications.
- ◆ Specify legs finish x spindle wood species.
- ◆ Made to order. Lead times determined by the production levels at the time of order.